

HARD-WORKING PARTS  
FOR HARD-WORKING PROS.



DIGGING SYSTEMS PARTS CATALOG  
SPRING 2017



TERRY DOWNING / VP/MANAGER OF OPERATIONS,  
WESTERN DIVISION, DAVIS H. ELLIOT  
CONSTRUCTION COMPANY

We know what it's like on the jobsite. You need to stay on schedule to stay profitable. That's why Ditch Witch® chains, specially manufactured headshaft sprockets, and digging teeth are designed to work together as a system to provide unparalleled trenching performance. And that's why they're backed by knowledgeable, experienced dealers providing expert service and support.

We're here to help you get the job done. Efficiently. And effectively. After all,

**WE'RE IN THIS TOGETHER.**

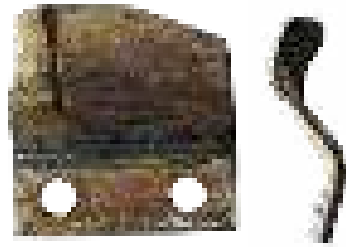


### DIGGING SYSTEM SIZES

<b>19K</b>	<b>C12, C14, C16, C16X, C24X, C30X</b>
<b>33K/35K</b>	<b>1030, 1230, 1330, 1820, C12, C14, C16, C16X, C24X, C30X, RT10, RT12, RT16, RT20, RT24, SK350, SK500, SK600, SK650, SK750, SK752, SK755, SK850, SK1050, R150, R230, R300, XT855, 410SX, 420SX, RT30 (35K only)</b>
<b>50K</b>	<b>3610, RT36, 3700, RT40, RT45, RT55, XT1600</b>
<b>70K/110K</b>	<b>RT55, RT70, RT75, RT80, RT80 QUAD, RT90, RT95, RT100, RT115, RT115 QUAD, HT115, RT120, RT120 QUAD</b>
<b>150K/225K</b>	<b>RT185, HT185 (Contact your local dealer.)</b>

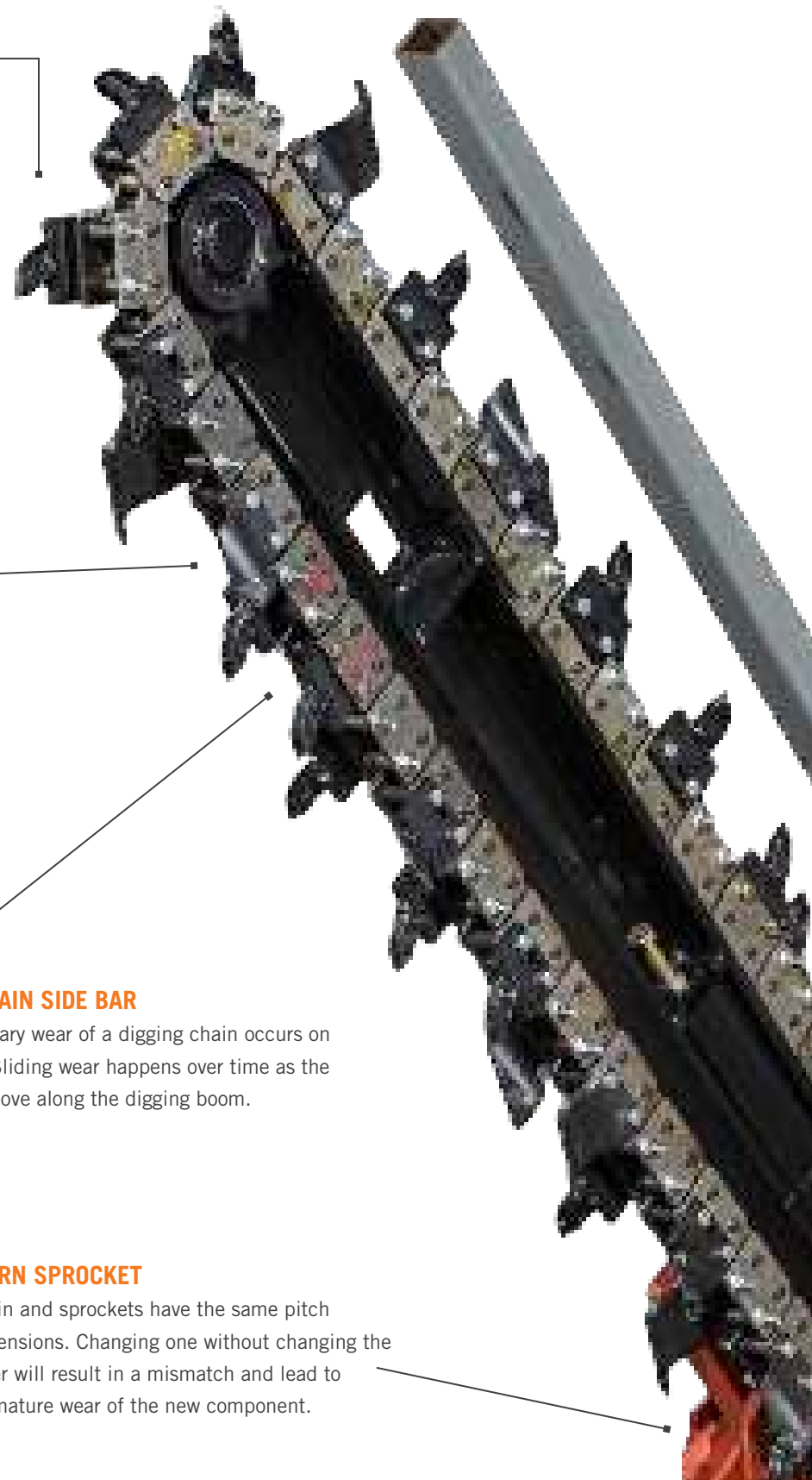
### TABLE OF CONTENTS

- 04 Best Practices for your Digging System
- 06 Chain Guides
- 08 The DuraTooth® Advantage
- 10 19K Digging Systems
- 12 33K Digging Systems
- 16 35K Digging Systems
- 20 33K/35K Digging Systems
- 24 50K Digging Systems
- 36 70K Digging Systems
- 40 70K/110K Digging Systems
- 42 110K Digging Systems
- 46 70K/110K Digging Systems
- 52 Conversion Sprockets
- 58 Plow Blades & Accessories
- 66 Earth Saw
- 68 Microtrenching
- 72 Roto Witch®
- 76 Vacuum Accessories
- 78 Uptime Kits



### WORN DIGGING TEETH

Dull or worn digging teeth will not cut or carry soils out of the trench efficiently, leading to decreased productivity.



### CHAIN ROLLER

Primary wear on a digging chain occurs at the chain roller. As chain rollers wear, they begin to resemble an apple core. At this point, the chain should be replaced to avoid potential downtime.



### WORN CHAIN SIDE BAR

The secondary wear of a digging chain occurs on side bars. Sliding wear happens over time as the side bars move along the digging boom.



### WORN SPROCKET

Chain and sprockets have the same pitch dimensions. Changing one without changing the other will result in a mismatch and lead to premature wear of the new component.

**No matter what brand you use,** proper monitoring and maintenance of your equipment and components will keep them performing their best. Instead of seeing upkeep as an expense, view it as an investment in your profitability since efficient, effective digging has a direct impact on your bottom line.

### TO GET THE BEST PERFORMANCE FROM YOUR MACHINE, ALWAYS FOLLOW THESE THREE SIMPLE STEPS:

**1**

Replace sprockets and digging chains at the same time. Replacing one without the other will cause premature wear of the new components.

**2**

Check your digging teeth regularly and replace worn digging teeth immediately.

**3**

Maintain the proper tension on the digging chain. Refer to your operator's manual for the correct tension.

*Your Ditch Witch® dealer can help you determine the right digging chain and tooth configuration for your application.*





**No matter what your task,** having the right tool for the job is critical for success. It's no different with digging chain. Ditch Witch® digging chain comes in a variety of configurations that will cut through almost any kind of ground condition you encounter. Selecting the right one can go a long way toward keeping you productive and preventing unnecessary wear and tear on your equipment.

## UNDERSTANDING PITCH

Digging chain is categorized three ways: by tooth type, tensile strength and pitch. In this catalog, you'll find four types of teeth: DuraTooth®, Alligator, Shark®, and a combination. Ditch Witch® chain is available in tensile strengths of 19,000 up to 225,000 pounds. But pitch is sometimes hard to understand.

### CHAIN IS AVAILABLE IN 2 PITCH AND 4 PITCH

#### 2-PITCH CHAIN



Two-pitch chain has a sidebar, or tooth, on every station.

#### 4-PITCH CHAIN

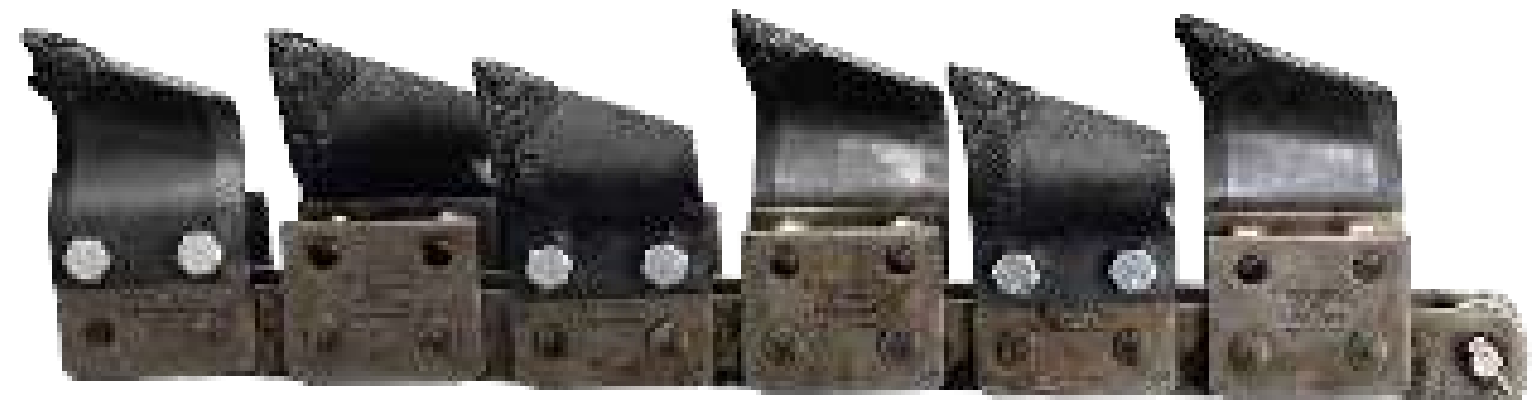


Four-pitch chain has a sidebar, or tooth, on every other station.

### CHAIN SELECTOR

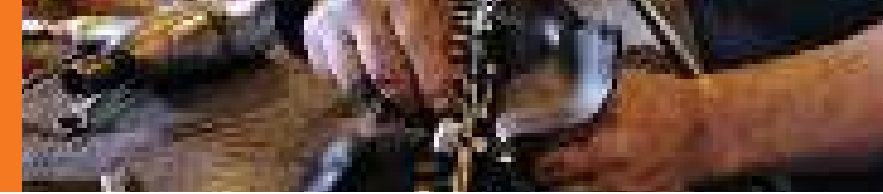
Key	●=Best	◐=Better	○=Good	Sandy Soil	Soft Soil	Medium Soil	Hard Soil	Rocky Soil	Sticky Soil
4-Pitch DuraTooth®				◐	●	◐	○		●
4-Pitch DuraTooth C2X				◐	●	◐	○		●
2-Pitch DuraTooth				●	◐	●	●	○	
2-Pitch DuraTooth C2X				●	◐	●	●	○	
Shark® Chain II				○	◐	●	◐	●	
Weld-on Alligator							◐	●	
Bolt-on Alligator						○	◐	●	
Bolt-on Alligator K-style						◐	●	●	
Shark/DuraTooth Combo						◐	●	●	
Shark/DuraTooth C2X Combo						◐	●	●	
Alligator/DuraTooth Combo						◐	●	●	
Alligator/DuraTooth C2X Combo						◐	●	●	
Alternating Side Bar									●
Bolt-on Shark						◐	●	●	

### MEASURING PITCH



A pitch is the distance between chain pins. This chain is 12 pitches long. Pitch size is measured from the center of a chain pin to the center of the next. There are five pitch sizes: 1.686", 2", 3.110", 4.5", and 4.540".

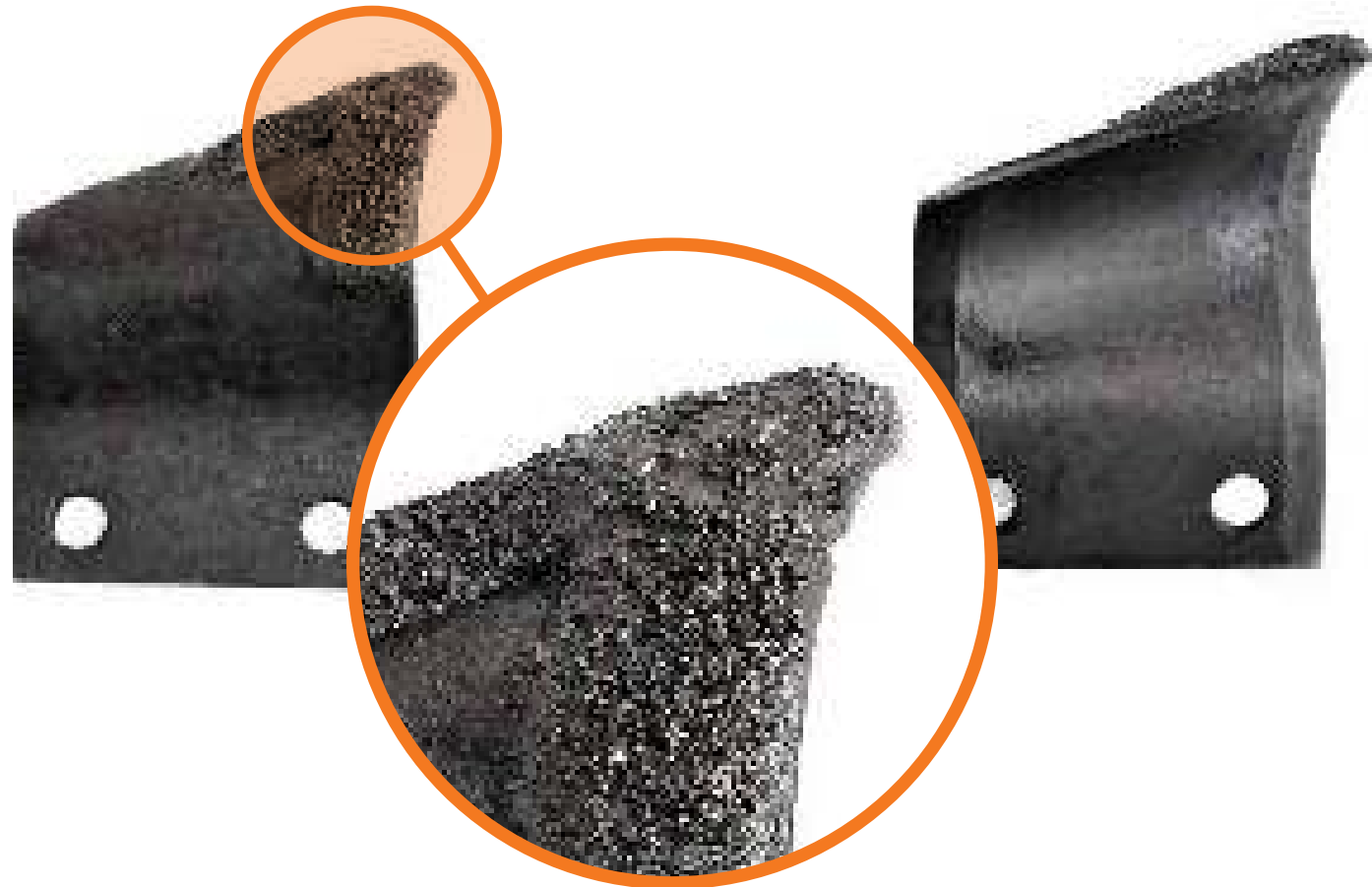




**MORE THAN 70 YEARS AGO,** we introduced the world's first service line trencher. And we've never stopped innovating.

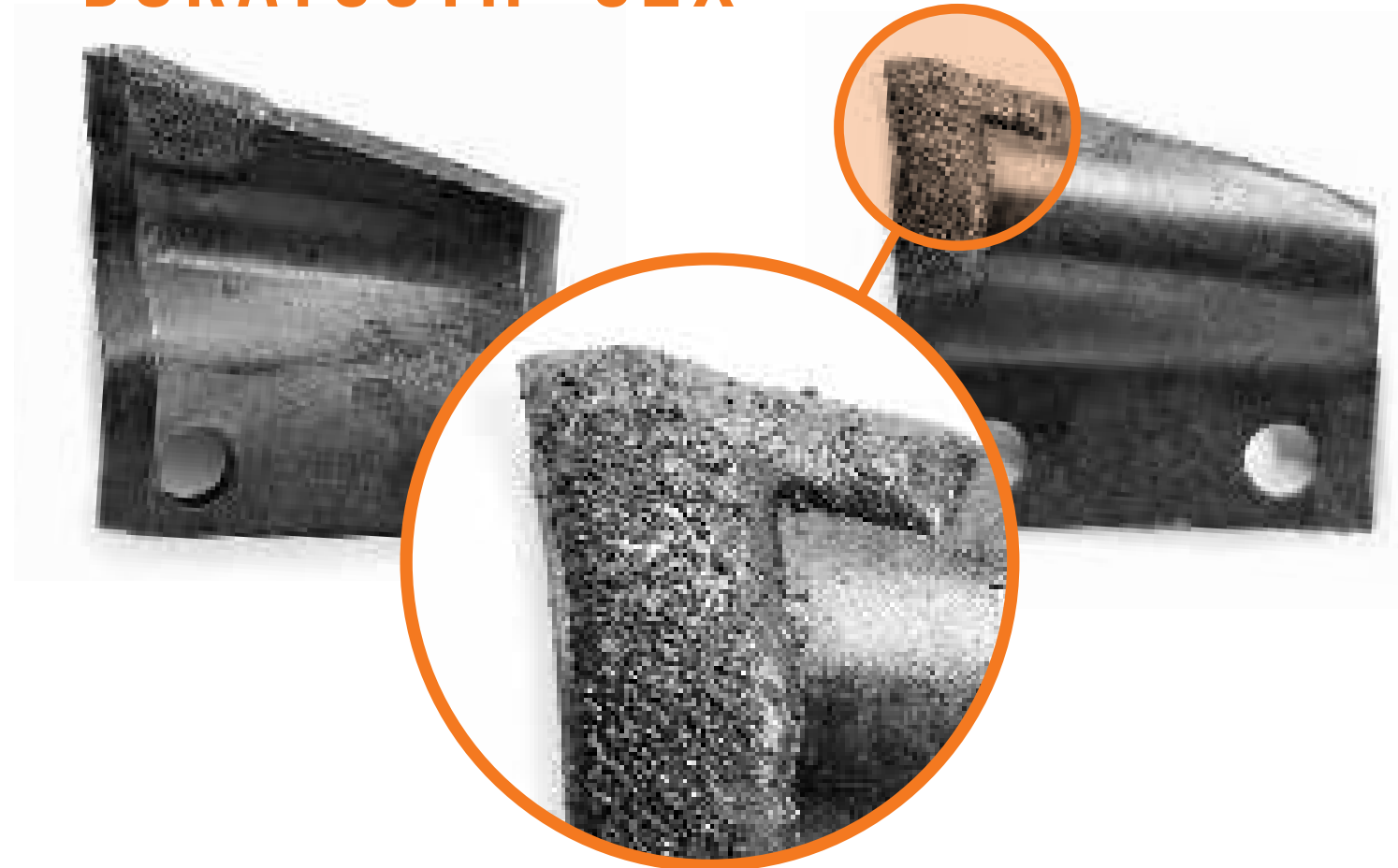
Our exclusive DuraTooth design was a breakthrough in trenching technology, improving performance and efficiency of the chain with a cupped digging tooth. And it's still the gold standard today.

## DURATOOTH

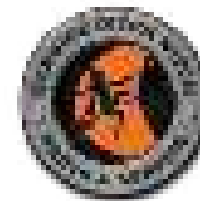


- Up to 35 percent more tungsten carbide—on the surface, in the base metal and in the weld—than any competitors' standard cupped tooth, for longer-lasting productivity and reduced downtime and expense.
- Tungsten carbide protects the cutting edge, where the greatest impact from the soil occurs, to ensure greater durability and performance.
- DuraTooth manufacturing process includes a six-point inspection to ensure long-lasting quality and value.
- Digging chain compatibility (tensile strength): 33K/35K, 50K, 70K/110K, and 150K/225K.

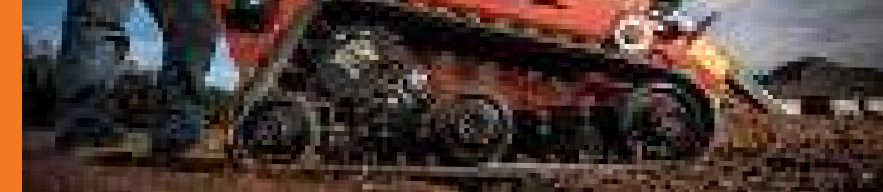
## DURATOOTH® C2X



- The only tooth that has tungsten carbide on the front, back and cutting edge—up to 70 percent more tungsten carbide than that of any tooth on the market.
- Sophisticated manufacturing process ensures a more efficient surface application of carbide and penetration into the tooth, resulting in longer life and increased productivity.
- In field tests, the DuraTooth C2X lasted twice as long as other digging teeth in various soil conditions—a return on investment that no competing tooth can match.
- DuraTooth C2X manufacturing process includes a six-point inspection to ensure long-lasting quality and value.
- Designed for heavy-duty performance with Ditch Witch® 50K, 70K/110K and 150K/225K tensile-strength chains.



**Only Ditch Witch digging components, like DuraTooth, are designed and specifically manufactured to work together as a system for optimal performance.**



19K CHAINS

FEATURES/BENEFITS OF OPTICUT™

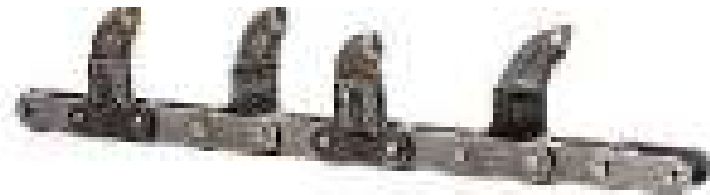
The all-new Ditch Witch® 19K digging system offers the exclusive OptiCut™ chain with integrated tooth technology. Its rugged design delivers durable performance to optimize productivity in all soil conditions, with 19,000 lbs of tensile strength and maintenance-free teeth that match the life of the chain. Optimal performance. Minimal maintenance. That's the OptiCut digging system.

OPTICUT™ COMBO SHARK®/CUP

Pitch Length	Part Number 3.5"
40	135-1518
46	135-1520
52	135-1528
58	135-1536



OPTICUT SHARK



Pitch Length	Part Number 3.5"
40	135-1519
46	135-1522
52	135-1529
58	135-1539

OPTICUT 4 PITCH DURATOOTH®

Pitch Length	Part Number 3.5"
40	135-1517
46	135-1521
52	135-1527
58	135-1538



MASTER LINK

Part Number	Description
140-1421	Master Link (19K)

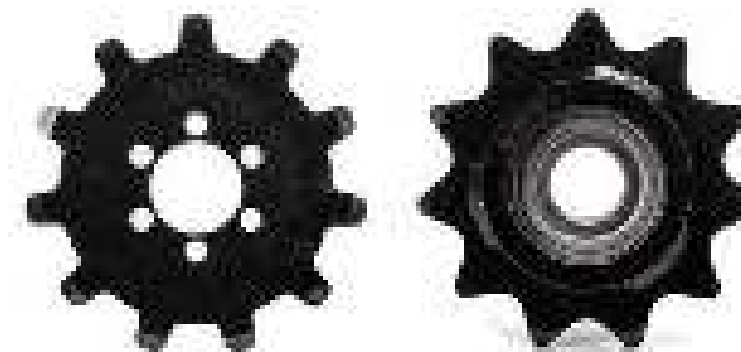


SPRING BOOMS

Pitch Length	Part Number	Description	Digging Depth
40	140-1394	18" Boom Assembly (19K)	18"
46	140-1395	24" Boom Assembly (19K)	24"
52	140-1418	30" Boom Assembly (19K)	30"
58	140-1403	36" Boom Assembly (19K)	36"



SPROCKETS



Part Number	Description
140-1347	19K Sprocket (11T)*
140-1392	Boom Tail Sprocket Assembly

\* requires hub spacer 302-0907





## 33K CHAINS

## DURATOOTH®



### 2 PITCH

Pitch Length	Part Number	
	4"	6"
44	131-292	
52	133-024	133-023
62	133-021	133-022
68	133-025	133-027
84	133-026	133-028

### 4 PITCH

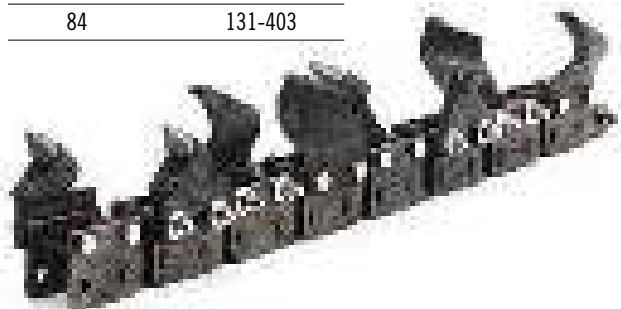
Pitch Length	Part Number						
	3"	4"	6"	8"	10"	12"	14"
52	133-029	133-030	133-031		133-033		
60						131-295	
62	133-080	133-081	133-082				
68	133-039	133-040	133-041	133-042	133-043	133-044	133-045
74				131-298			
84	133-049	133-050	133-051	133-052		133-054	
90			131-299				
100		133-060					



## DURATOOTH COMBOS

### ALLIGATOR/DURATOOTH

Pitch Length	Part Number
	4"
52	131-401
62	131-406
68	131-402
84	131-403



### SHARK®/DURATOOTH

Pitch Length	Part Number
	4"
52	131-409
62	131-414
68	131-410
84	131-411



## BARE CHAINS



### 2 PITCH

Pitch Length	Part Number
16	137-014
44	131-294
52	137-015
62	137-016
84	131-144
92	137-018

### 4 PITCH

Pitch Length	Part Number
16	137-010
44	131-293
52	137-011
60	131-296
62	137-017
68	131-044
72	137-012
74	131-297
84	131-045
90	137-013
100	131-046



"The Shark® teeth are the best thing I've ever used. We dig in some pretty hard clay—sometimes it's like digging through concrete—and it really gets the job done. I wouldn't use anything else."

– Fred Martin, Volvo Rents Service Manager



## 33K CHAINS

### BOLT-ONS



#### ALLIGATOR

Pitch Length	Part Number
52	133-150



#### SHARK®

Pitch Length	Part Number
52	133-148
62	133-153
68	133-149



Part Number
131-035

### REPAIR STATIONS



#### MASTER PINS

Part Number	Description
135-1027	Chain Pin
135-1085	Lock Key

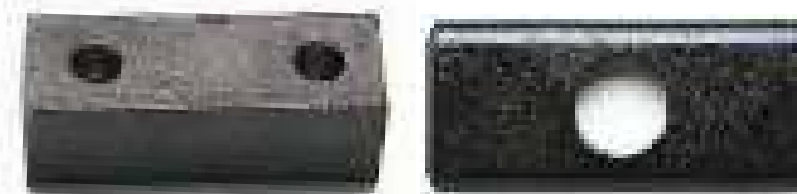
### AUGERS



Part Number	Model
145-309	1020/1220
320-267	1030, 1230, 1330
145-285	1820
145-206	SK3TR, SK5TR, 410SX
300-8782	RT10, RT12, RT16, RT20, RT24
300-3472	1TRI, TR4, SK4TR
140-1182*	1TRH
300-3455	1TRH

\* Begins with serial number 394.

### TOOTH ADAPTERS



Part Number	Description	Size
136-029	Tooth Spacer	1"
136-047	Tooth Adapter	8" width
136-048	Tooth Adapter	10" width
136-049	Tooth Adapter	12" width

You can find a large inventory of genuine Ditch Witch® parts, for equipment new and old, at your Ditch Witch dealer. If we don't have the part you need, we can get it fast—usually within 24 hours.





35K CHAINS

BARE CHAINS



**4 PITCH**

Pitch Length	Part Number
52	130-1101
62	130-1102
68	130-1103
84	130-1104

**2 PITCH**

Pitch Length	Part Number
16	137-208
52	137-209
62	137-210
68	135-1531
92	137-211

DURATOOTH® COMBOS

**ALLIGATOR/DURATOOTH**

Pitch Length	Part Number	
	4"	6"
52	137-229	
62	137-230	
68	137-231	
78	135-1456	135-1457
84	137-232	



DURATOOTH®



**4 PITCH**

Pitch Length	Part Number	
	4"	6"
52	135-1601	135-1605
62	135-1602	135-1606
68	135-1603	135-1607
84	135-1604	135-1608

**2 PITCH**

Pitch Length	Part Number	
	4"	6"
44	135-1600	
52	137-218	137-217
62	137-215	137-216
68	137-219	137-221
78	135-1450	135-1451
84	137-220	137-222



**SHARK®/DURATOOTH**

Pitch Length	Part Number	
	4"	6"
52	137-233	135-1021
62	137-235	135-1633
68	137-236	135-1445
78	135-1454	135-1455
84	137-237	



## 35K CHAINS

### SHARK® II



Pitch Length	Part Number	
	4"	6"
52	131-146	131-180
62	131-320	131-321
68	131-148	131-182
78	135-1458	135-1459
84	131-149	131-183



### REPAIR STATIONS

Part Number	Description
131-001	Standard
131-164	Shark II (4")
131-185	Shark II (6")



#### MASTER PINS

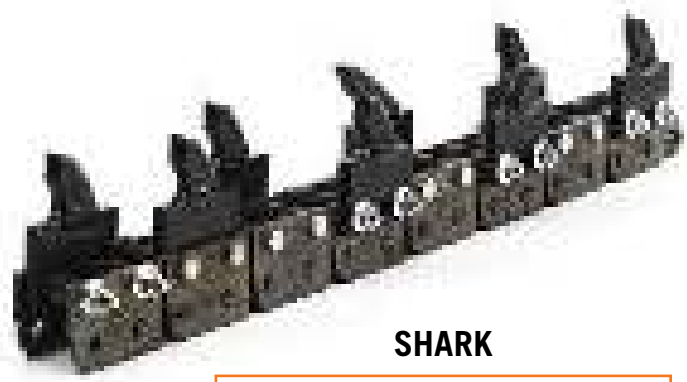
Part Number	Description
135-1028	Chain Pin
135-1085	Lock Key

### BOLT-ONS



ALLIGATOR

Pitch Length	Part Number
52	137-223
62	137-224
68	137-225



SHARK

Pitch Length	Part Number	
	4"	6"
52	137-226	
62	137-227	
68	137-228	
78	135-1452	135-1459

### AUGERS

Part Number	Model(s)
145-309	1020/1220
320-267	1030, 1230, 1330
145-285	1820
145-206	SK3TR, SK5TR, 410SX
300-8782	RT10, RT12, RT16, RT20, RT24
301-5389	RT30
300-3472	1TRI, TR4, SK4TR
140-1182*	1TRH
300-3455	1TRH
140-1350**	C12, C14, C16
140-1371**	C16X, C24X, C30X

\* Begins with serial number 394.  
 \*\* Add auger spacer 301-7048 (35K) or 302-0691 (19K)



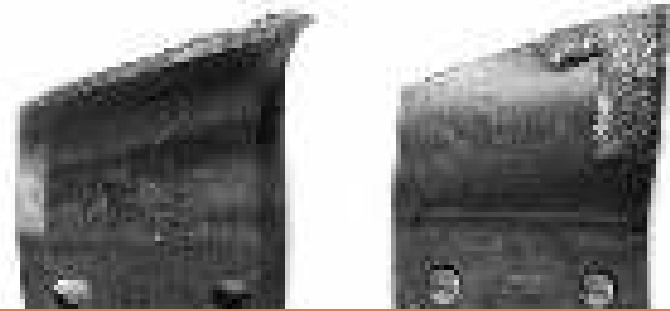
### TOOTH ADAPTERS

Part Number	Description	Size
136-029	Tooth Spacer	1"
131-003	Cast Tooth Adapter	8" width
131-004	Cast Tooth Adapter	10" width
131-005	Cast Tooth Adapter	12" width





## 33K/35K TEETH & BITS



Part Number
135-1230 Left
135-1231 Right

### DURATOOTH®

Part Number
135-638 Left
135-639 Center
135-637 Right



### BOLT-ON SHARK®

Part Number
131-259

### BITS

Part Number
136-165 Left
136-164 Center
136-163 Right

### BIT HOLDERS

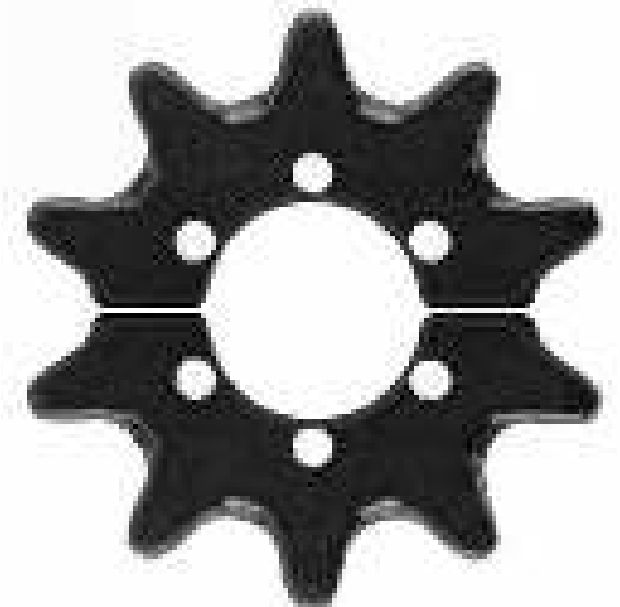


## 33K/35K SPROCKETS & ROLLERS

### SPROCKETS

#### HEADSHAFT SPROCKET

Part Number	Model(s)
140-703 (9T)	1030, 1230, 1330
300-0081 (12T)	RT10, RT12, RT16, RT20, RT24
375-1164 (11T)	C12, C14, C16, C16X, C24X, C30X

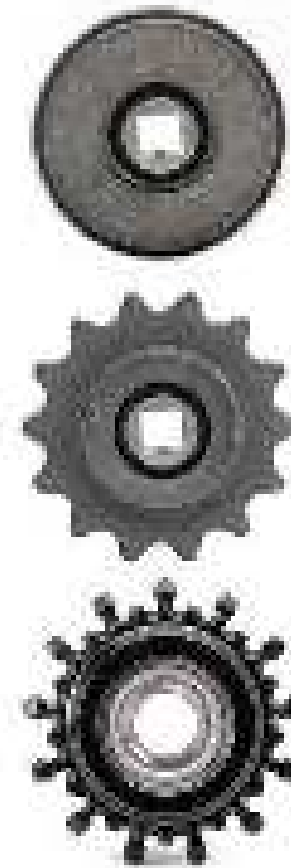


#### SPLIT HEADSHAFT SPROCKET

Part Number	Model(s)
142-039 (10T)	1820
301-1871 (10T) with mud relief	
142-109 (10T)	SK3TR, SK4TR, SK5TR, 1TR1, 1TR4, 410SX
140-703 (9T)	1030, 1230, 1330

#### TAIL SPROCKET AND ROLLER ASSEMBLY

Part Number	Description
140-653	12T Tail Sprocket Assy
140-1099	14T Tail Sprocket Assy
142-754	Tail Roller Assembly
140-1104	Greasable Tail Roller Assembly
140-1289	Low-Profile Sprocket™, Sealed
140-1290	Low-Profile Sprocket, Greasable
140-1424	Spring Boom Tail Sprocket Assembly





## 33K/35K BOOMS

# BOOMS

### SMALL TAIL SPROCKET BOOM

- Shock-absorbing urethane bushing.
- Simple, open design reduces buildup in sticky soils.
- Features sealed tail and idler sprockets.
- Available in 36" and 48" depths.



**SMALL TAIL SPROCKET BOOM**

Digging Depth	Pitch Length	Part Number
36"	68P	140-060
48"	84P*	140-060 140-551 Boom Extension

### 35K SPRING BOOM

- Urethane spring absorbs shocks while trenching.
- Inner sleeve for easy boom installation/removal.
- Large tail roller bearing with triple lip seals.
- Patent-pending boom and sprocket designs.

### STANDARD BOOM

- Proven, rugged design.
- Manual adjustment for chain tensioning.
- Available with (greasable or sealed) tail roller or (greasable or sealed) Low-Profile Sprocket™.

### SPLIT BOOM

- Lower cost for value-minded consumer operating in light to medium conditions.
- Manual adjustment for chain tensioning.
- Unique split boom design allows for quick and easy installation and removal (reduced "sticking").
- Available with (greasable or sealed) tail roller or new (greasable or sealed) Low-Profile Sprocket.

### GREASABLE BOOM

- Similar to our proven standard boom, but with grease cylinder to tension digging chain.
- Available with sealed roller, greasable roller, or greasable Low-Profile Sprocket.



**35K SPRING BOOM    STANDARD BOOM    SPLIT BOOM    GREASABLE BOOM**

Digging Depth	Pitch Length	Part Number	Part Number	Part Number	Part Number
24"	52P	140-1205	140-1302	140-1310	—
30"	62P	140-1206	140-1287	140-1311	—
36"	68P	140-1207	140-1288	140-1332	—
42"	76P	—	140-1304	—	—
48"	84P*	140-1397	140-1306	—	—

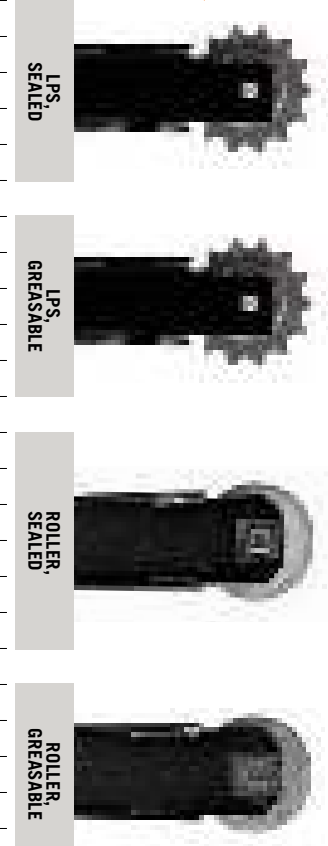
Digging Depth	Pitch Length	Part Number	Part Number	Part Number	Part Number
24"	52P	—	140-1303	140-1101	140-1318
30"	62P	—	140-1292	140-1100	140-1319
36"	68P	—	140-1293	140-1328	140-1327
42"	76P	—	140-1305	—	—
48"	84P*	—	140-1307	—	—

Digging Depth	Pitch Length	Part Number	Part Number	Part Number	Part Number
18"	44P	—	141-775	—	—
24"	52P	—	141-792	140-1162	141-794
30"	62P	—	141-793	140-1163	141-795
36"	68P	—	141-791	140-1334	141-796
42"	76P	—	140-1240	—	—
48"	84P*	—	140-531	—	—

Digging Depth	Pitch Length	Part Number	Part Number	Part Number	Part Number
18"	44P	—	140-1110	—	—
24"	52P	—	140-1112	140-1122	140-1114
30"	62P	—	140-1113	140-1123	140-1115
36"	68P	—	140-1111	140-1333	140-1116
48"	84P*	—	140-1106	—	—

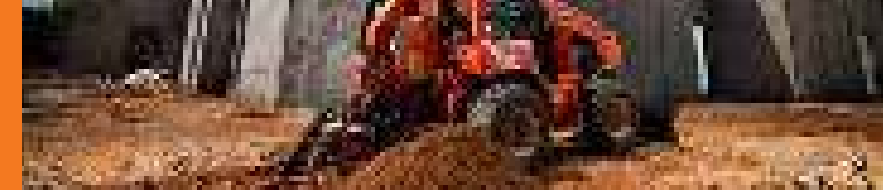
### LOW-PROFILE SPROCKET (LPS™)

- Low-profile teeth on tail roller reduce "seize up" and "flat-spotting" roller.
- Lower profile teeth (versus traditional sprockets) result in less chain wear and potential for binding.



\* XT855 requires 90P of chain for 48" depth.





50K CHAINS

PUTTING POWER TO WORK.



Ditch Witch® trenchers and compact utility equipment lead the industry in productivity, not because of their power, but because of how their power is directed to the business end of the machine. No underground construction equipment manufacturer better understands the connection between power and performance, and more effectively applies that understanding.

BARE CHAINS

2 PITCH

Pitch Length	Part Number
12	138-217
16	138-219
24	138-216
54	138-228
64	131-135
68	138-218
72	138-215
84	135-1532
96	135-1533



ANTI-BACKFLEX 2 PITCH

Pitch Length	Part Number
68	139-218
72	139-215

4 PITCH

Pitch Length	Part Number
12	138-210
16	138-211
24	138-212
64	131-136
68	138-213
72	138-214



ALTERNATING SIDE BARS



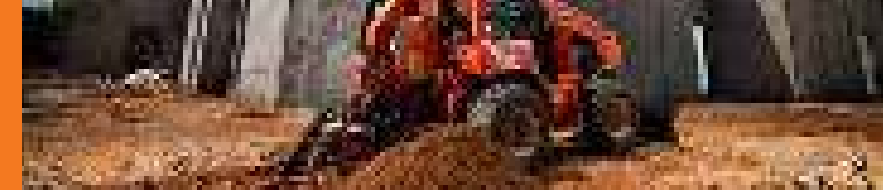
BARE CHAIN

Pitch Length	Part Number
12	138-279
16	138-278
24	138-280
72	138-281



DURATOOTH® CHAIN ASSEMBLY

Pitch Length	Part Number			
	5"	6"	5" C2X	6"
68	133-282			
112		133-299	135-1311	135-1308
168			135-1301	



50K CHAINS

DURATOOTH®

2 PITCH

Pitch Length	Part Number					
	5"	6"	8"	10"	12"	16"
54				131-115	131-116	131-117
64	131-137	131-138				
68	133-322	133-293	131-009	131-010	131-011	
72	133-324	133-290			131-008	
80	133-358	133-359	131-012	131-013	131-014	
84	133-356	133-325	131-015	131-016	131-017	
88	133-330	133-294				
92	133-360	133-361				
96	133-331	133-291				
100	133-332	133-224				
108	133-333	133-292				
112	133-391	133-295				
116	133-364					
120		133-268				

4 PITCH

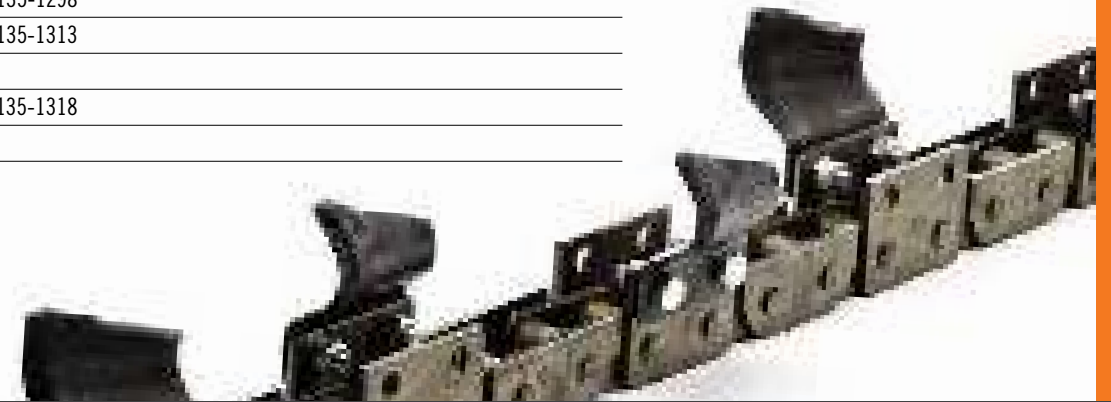
Pitch Length	Part Number					
	5"	6"	8"	10"	12"	16"
64		131-142	131-143			
68	133-234	133-235				
72	133-240			133-267		
75	133-315					
80	133-245	133-246	133-247			133-249
84	133-357	133-326	133-327	133-328	133-329	
88	133-301			133-303		
92	133-255	133-256				
96	133-317	133-250	133-251		133-252	
100	133-318					
108	133-259	133-260		133-267		
112	133-309	133-310				
116	133-365					
124	133-319					
144	133-367					

C2X  
2 PITCH

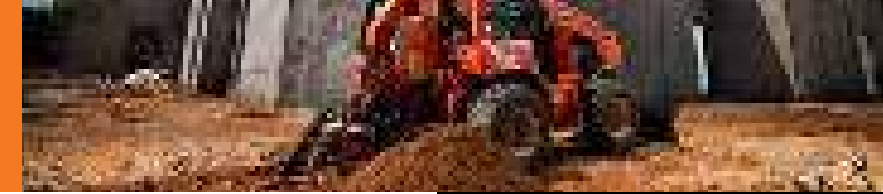
Pitch Length	Part Number					
	5"	6"	8"	10"	12"	16"
54				135-1261	135-1262	135-1263
64	135-1264	135-1265	135-1266			
68	135-1319	135-1305	135-1252	135-1253	135-1254	
72	135-1320	135-1302			135-1251	
80	135-1335	135-1344	135-1255	135-1256	135-1257	
84	135-1333	135-1321	135-1258	135-1259	135-1260	
88	135-1326	135-1306				
92	135-1336	135-1337				
94	135-1327					
96		135-1303				
100	135-1328	135-1279				
108	135-1329	135-1304				
112	135-1346	135-1307				
116	135-1338					
120	135-1331					
144	135-1341					

C2X  
4 PITCH

Pitch Length	Part Number					
	5"	6"	8"	10"	12"	16"
64	135-1268	135-1269	135-1270			
68	135-1281	135-1282	135-1283	135-1285	135-1284	
72	135-1286			135-1299	135-1287	
75	135-1314					
80	135-1288	135-1289	135-1290			135-1291
84	135-1334	135-1322	135-1323	135-1324	135-1325	
88	135-1309			135-1310		
92	135-1295	135-1296				
96	135-1315	135-1292	135-1293		135-1294	
100	135-1280					
108	135-1297	135-1298				
112	135-1312	135-1313				
116	135-1340					
124	135-1317	135-1318				
144	135-1342					







50K CHAINS

COMBOS

SHARK®/DURATOOTH®

Pitch Length	Part Number	
	6"	12"
60		135-1483
64	131-140	
68	131-415	
80	131-412	
84	131-413	
96	131-416	



SHARK/DURATOOTH C2X

Pitch Length	Part Number
64	135-1267
68	135-1277
80	135-1275
84	135-1276
96	135-1278



ALLIGATOR/DURATOOTH

Pitch Length	Part Number
80	131-404
84	131-405
96	131-408



ALLIGATOR/DURATOOTH C2X

Pitch Length	Part Number
68	135-1273
80	135-1271
84	135-1272
96	135-1274



WELD-ONS



ALLIGATOR

Pitch Length	Part Number
80	131-050
84	131-096
96	131-097



SHARK® II

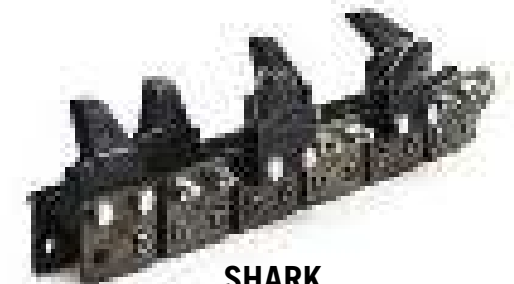
Pitch Length	Part Number
54	131-175
68	131-171
80	131-172
84	131-173
96	131-174

BOLT-ONS



ALLIGATOR

Pitch Length	Part Number	
	5"	6"
68	135-336	131-407
72	135-335	
84	135-337	
96	138-225	



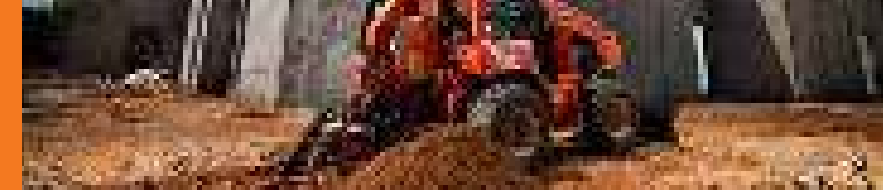
SHARK

Pitch Length	Part Number
68	132-302
72	132-301
84	132-303



REPAIR STATIONS

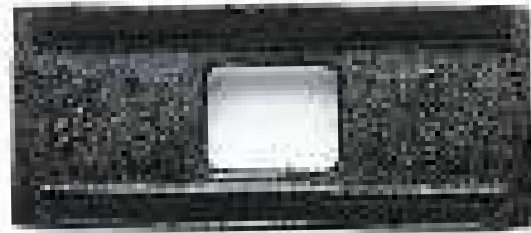
Part Number	Description
131-131	Repair Station
135-1067	Chain Pin
135-1086	Lock Key
131-184	Shark II
135-1149	Premium
138-203	Roller Link



50K CHAINS

50K TEETH & BITS

TOOTH ADAPTERS



Part Number	Size
135-912	8" width
135-950	10" width
135-913	12" width
135-914	16" width



AUGERS

Part Number	Description
145-071 Left	Long Auger
145-070 Right	Long Auger
145-110 Left	Short Auger
145-109 Right	Short Auger

DURATOOTH®



DURATOOTH

Part Number
135-1233 Left
135-1236 Right

DURATOOTH C2X

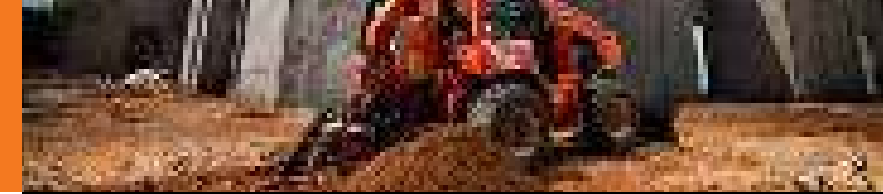
Part Number
135-1234 Left
135-1237 Right



Part Number

136-236 Left inline
136-237 Right inline
136-239 Left outside
136-238 Right outside
136-240 Left wide
136-241 Right wide

BOLT-ON SHARK® TEETH



50K TEETH & BITS

50K SPROCKETS & ROLLERS

BOLT-ON BIT ADAPTERS



Part Number
136-036 Left inline
136-037 Right inline
136-039 Left outside
136-038 Right outside
136-040 Left wide
136-041 Right wide

INSERT BITS



Part Number	Description
136-100	Cap Bit
136-101	Insert Bit
136-102	Insert Bit

SPROCKETS



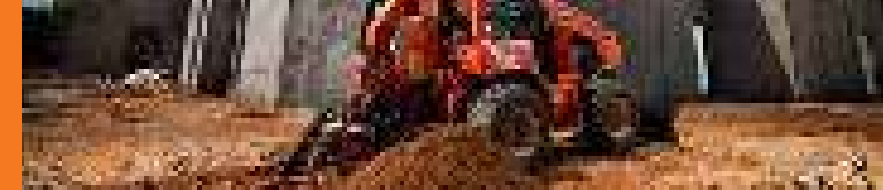
Part Number	Description
142-005	10T Split Headshaft Sprocket
142-029	12T Headshaft Sprocket
142-030	14T Headshaft Sprocket
142-044	14T Split Headshaft Sprocket
142-127	12T Split Headshaft Sprocket
142-031	14T Auger Sprocket

TAIL ROLLERS



Part Number	Description
140-1398	Low Profile Tail Sprocket Assembly (Sealed) - TR50
142-751	Tail Roller Assembly

50K DIGGING SYSTEMS



50K BOOMS

BOOMS

SMALL TAIL SPROCKET STANDARD BOOM

Digging Depth	Pitch Length	Part Number
36"	80P	140-124 RT55 33" 82P ON H516 & H553
48"	96P	140-125 RT55 46" 98P ON H516 & H553
60"	108P	140-330 RT55 58" 110P ON H516 & H553



TR50 FOOTINGS UNIT BOOM

Digging Depth	Pitch Length	Part Number
24"	54P	140-1409
30"	60P	140-1410
36"	68P	140-1411

LARGE TAIL ROLLER BOOM  
GREASE TENSION

Digging Depth	Pitch Length	Part Number
36"	80P	143-181
42"	84P	143-050, H314, H350, H516, H553
48"	84P	143-180
52"	96P	143-060, H314, H350, H516, H553



SMALL TAIL SPROCKET WEAR BAR BOOM

Digging Depth	Pitch Length	Part Number
44"	72P	140-616
60.5"	88P	140-622





70K CHAINS

EVERY PART MATTERS.  
EVERY TIME.



We can guarantee the superior quality and performance of our parts because we design, test and manufacture each part to provide optimal performance with its compatible equipment. We're the only underground construction equipment manufacturer that does this. Why? Because when you're on site trying to finish a job, there is no such thing as an unimportant part.

BARE CHAINS



ANTI-BACKFLEX  
2 PITCH

Pitch Length	Part Number
8	139-701
16	139-702
52	139-703
62	139-704

4 PITCH

Pitch Length	Part Number
8	138-509
16	138-510
52	138-512
62	138-511



2 PITCH

Pitch Length	Part Number
8	138-701
16	138-702
52	138-703
62	138-704





**DURATOOTH®**



2 PITCH

Pitch Length	Part Number			
	6"	10"	C2X	
			6"	10"
62	133-726	133-728	135-1380	135-1381
68	133-787		135-1382	
76	133-790		135-1383	
78	133-746			



4 PITCH

Pitch Length	Part Number			
	6"	8"	C2X	
			6"	8"
62	133-534	133-535	135-1374	135-1375
70	133-544		135-1376	
78	133-554	133-555	135-1377	135-1378
94	133-564		135-1379	

**ANTI-BACKFLEX  
2 PITCH**

Pitch Length	Part Number			
	6"	8"	C2X	
			6"	8"
62	134-726		135-1396	
70	134-736		135-1397	
78		134-747		135-1398
94	134-756			

**BOLT-ON ALLIGATOR**



**ALLIGATOR®**

Pitch Length	Part Number 6"
52	135-775
62	135-776
68	135-786
70	135-777
76	135-789
78	135-778
94	135-779

**ALLIGATOR  
PREMIUM/ANTI-BACKFLEX**

Pitch Length	Part Number 6"
62	137-776
70	137-777
78	137-778





70K CHAINS

110K CHAINS

REPAIR STATIONS



Part Number	Description
135-1182	Standard



PREMIUM/ANTI-BACKFLEX REPAIR STATION

Part Number
135-1187

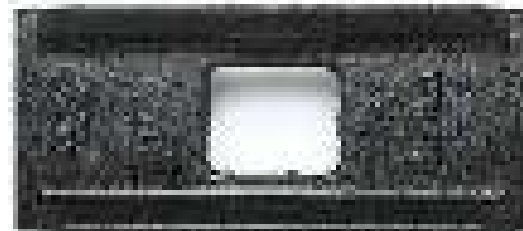
MASTER PINS

Part Number	Description
135-1145	Chain Pin (includes Lock Key)
135-1176	Lock Key

TOOTH ADAPTERS



Part Number	Description
145-071 Left	Long
145-070 Right	Long
145-110 Left	Short
145-109 Right	Short



Part Number	Size
135-912	8" width
135-901	10" width
135-902	12" width
135-903	14" width
135-904	16" width

AUGERS



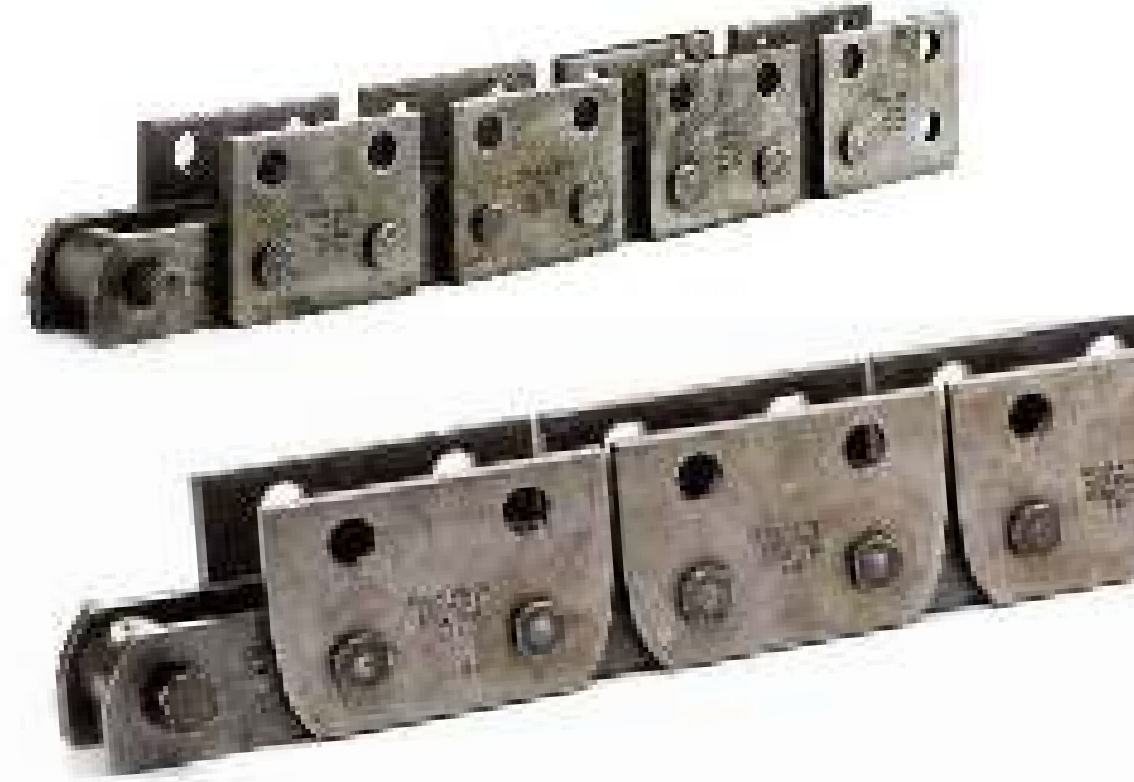
2 PITCH

Pitch Length	Part Number
4	138-413
8	138-412
10	138-414
16	138-410
62	138-411
70	135-1534
78	135-1535

ANTI-BACKFLEX 2 PITCH

Pitch Length	Part Number
8	139-412
16	139-410
62	139-411

BARE CHAINS

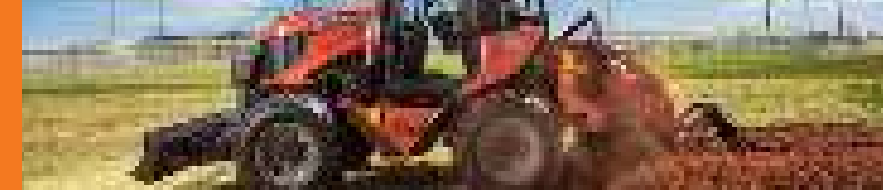


K-STYLE 2 PITCH

Pitch Length	Part Number
8	131-244
62	131-241
64	131-242
70	131-243

4 PITCH

Pitch Length	Part Number
8	138-471
16	138-472
62	138-473



# DURATOOTH®

## 2 PITCH

Pitch Length	Part Number				
	7"	8"	10"	12"	15"
62	133-420	133-421		133-423	
70	133-459	133-460	133-461	133-462	133-463
78	133-430	133-431		133-433	133-434
94	133-440	133-441			



## C2X 2 PITCH

Pitch Length	Part Number				
	7"	8"	10"	12"	15"
62	135-1360	135-1361		135-1362	
70	135-1369	135-1370	135-1371	135-1372	135-1373
78	135-1363	135-1364		135-1365	135-1366
94	135-1367	135-1368			

## ANTI-BACKFLEX 2 PITCH

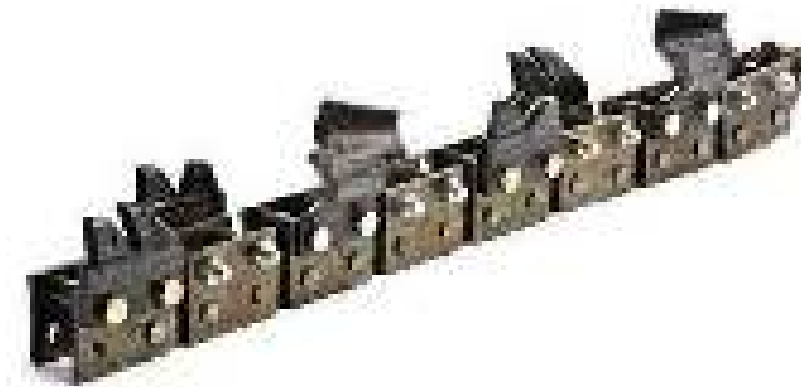
Pitch Length	Part Number				
	6"	8"	10"	12"	15"
62	134-420	134-421	134-422	134-423	
70	134-459	134-460	134-461	134-462	134-464
78	134-430	134-431		134-433	

## C2X ANTI-BACKFLEX 2 PITCH

Pitch Length	Part Number					
	7"	8"	10"	11"	12"	15"
62	135-1384	135-1385	135-1386		135-1387	
70	135-1391	135-1392	135-1393	135-1394		135-1395
78	135-1388	135-1389			135-1390	



# DURATOOTH® COMBOS



## SHARK®/DURATOOTH

Pitch Length	Part Number	
	6"	C2X 6"
62	131-264	135-1351
66	131-265	135-1352
70	131-266	135-1353
72	131-267	135-1354
78	131-268	135-1355



## ALLIGATOR/DURATOOTH

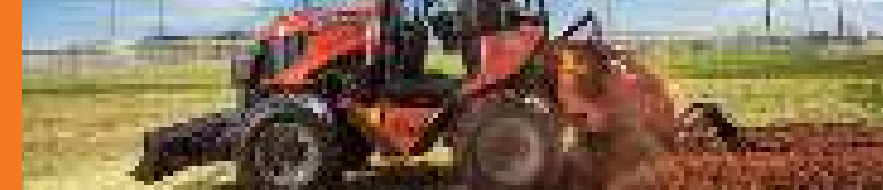
Pitch Length	Part Number	
	6"	C2X 6"
62	131-269	135-1356
70	131-270	135-1357
72		135-1359
78	131-271	135-1358

# BOLT-ONS

## ALLIGATOR

Pitch Length	Part Number	
	6"	ANTI-BACKFLEX 6"
62	135-485	137-485
70	135-486	137-486
78	135-487	137-487
94	135-488	137-488





## 110K CHAINS



ALLIGATOR K-STYLE

Pitch Length	Part Number	
	8"	10"
62	131-245	131-249
70	131-247	131-251
78	131-248	131-252

# ALLIGATOR®

### WELD-ON ALLIGATOR

Pitch Length	Part Number	
	6"	7"
4		135-1510
6	135-1511	
8	135-1512	135-1513
62	135-1484	
64	135-1514	
70	135-1515	135-1465

# REPAIR STATIONS



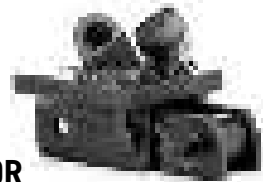
PREMIUM / ANTIBACKFLEX REPAIR STATION

Part Number
135-1188



STANDARD REPAIR STATION

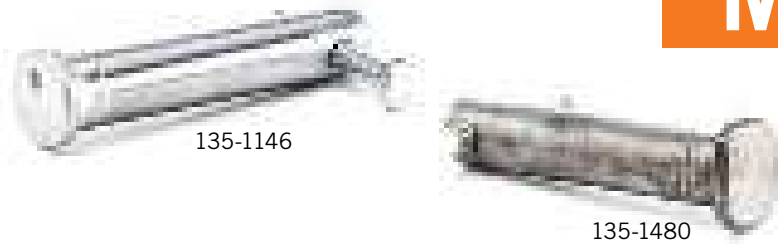
Part Number	Description
135-1183	
135-1176	Lock Key
135-1480	Master Pin, Obround
135-1146	Master Pin, Round



ALLIGATOR REPAIR STATIONS

Description	Part Number
K-Style	131-1185
Alligator	135-1474 (7")

# MASTER PINS



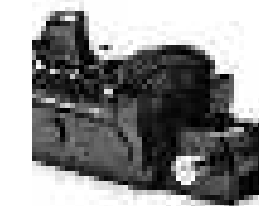
135-1146

135-1480

Part Number	Description
135-1146	Round Master Pin
135-1480	Obround Master Pin

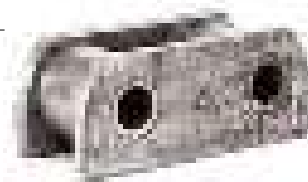
### SHARK II REPAIR STATION

Description	Part Number
Shark II 6"	135-1623
Shark II 8"	135-1624
Replaceable Shark 6"	135-1625
Replaceable Shark 8"	135-1626

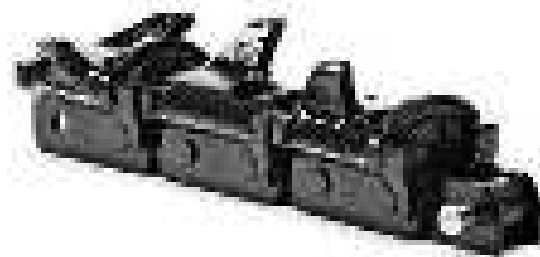


### ROLLER LINKS

Part Number
135-1490



# SHARK® II



SHARK II

Pitch Length	Part Number	
	6"	8"
62	135-1494	135-1497
64	135-1495	135-1498
70	135-1496	135-1499
78	135-1492	135-1493



REPLACEABLE BIT SHARK II

Pitch Length	Part Number	
	6"	8"
62	135-1500 Requires 52 Bits	135-1501 Requires 67 Bits
70	135-1502 Requires 56 Bits	135-1503 Requires 76 Bits
78	135-1504 Requires 62 Bits	135-1505 Requires 85 Bits

# TOOTH ADAPTERS



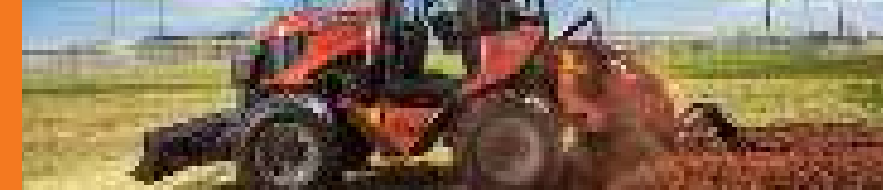
Part Number	Size
135-901	10" width
135-902	12" width
135-903	14" width
135-904	16" width
135-905	18" width



# AUGERS

Part Number	Description
145-071	Left Long
145-070	Right Long
145-110	Left Short
145-109	Right Short





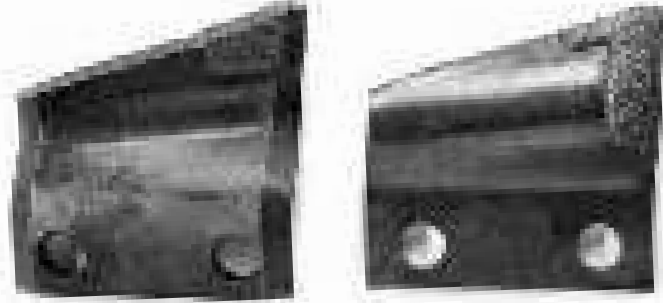
70K/110K TEETH & BITS

DURATOOTH®



DURATOOTH

Part Number
135-1239 Left
135-1242 Right



DURATOOTH C2X

Part Number
135-1240 Left
135-1243 Right



INSERT BITS

ALLIGATOR INSERT BIT (.765 DIAMETER)

Part Number	Description
136-100	Cap Bit
136-101	Insert Bit
136-102	Insert Bit



BOLT-ONS



SHARK® TOOTH

Part Number
136-275 Left Inside
136-276 Right Inside
136-274 Left Outside
136-273 Right Outside



BIT HOLDER

Part Number
135-975 Left Inside
135-976 Right Inside
135-973 Left Outside
135-974 Right Outside



WELD-ON AND K-STYLE ALLIGATOR INSERT BIT (.875 DIAMETER)

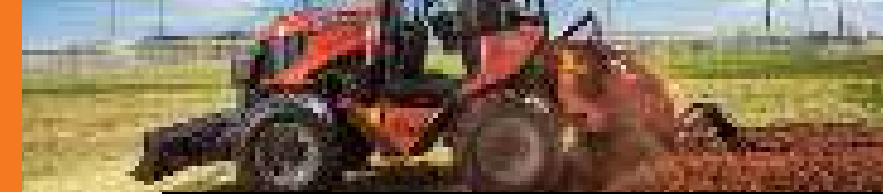
Part Number	Description
131-290	Cap Bit
136-222	Insert Bit
131-828	Retainer Ring



REPLACEABLE SHARK® BIT

Part Number	Description
401-277	Shark Bit





70K/110K SPROCKETS

SPROCKETS

HEADSHAFT SPROCKET

Part Number	Description
140-717	Split 10T
141-589	Split 11T
141-740	Split 12T
142-009	Solid 10T



IDLER SPROCKET

Part Number	Description
142-038	10T – RT55



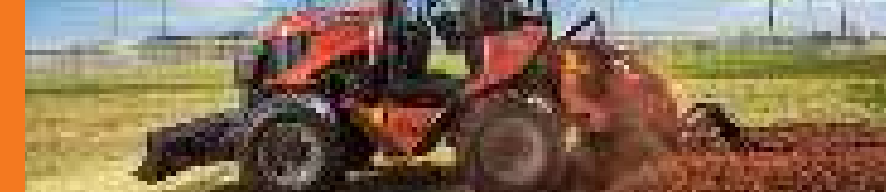
AUGER SPROCKET

Part Number	Description
140-665	10T



IDLER SPROCKET

Part Number	Description
140-656	10T (Includes Bearings)



70K/110K BOOMS & ROLLERS

BOOMS AND TAIL ROLLERS

BOOMS



LARGE TAIL ROLLER BOOM WITH WEAR BAR



TAIL ROLLER

Part Number	Description
142-757	19 in. Tail Roller (L/ Bearings)
129-013	HD Tail Roller (L/ Bearings)
142-756	Tail Roller (RT80 - L/Bearings)



LARGE TAIL ROLLER BOOM WITH WEAR BAR

Digging Depth	Pitch Length	Part Number
39"	52	143-120
52"	62	143-130
62"	78	143-375
62"	76	140-1225

Digging Depth	Pitch Length	Part Number			
		Tail Roller Boom		Heavy Duty Boom	
		Boom	Boom Tube	Boom	Boom Tube
48"	62	140-546	140-1128	141-659	140-1176
58"	70	140-547	140-1129	141-658	140-1177
69"	78	140-548	140-1130	141-660	140-1178

SMALL TAIL SPROCKET BOOM

Digging Depth	Pitch Length	Part Number
45"	62	143-205
52"	68	143-206
65"	78	143-207
93"	94	143-208
52"	68	140-128
62"	78	140-331
84"	94	140-1186

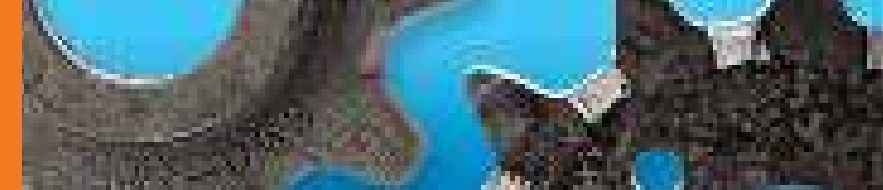


LARGE TAIL ROLLER BOOM WITHOUT WEAR BAR

Digging Depth	Pitch Length	Part Number	
		Boom	Boom Tube
48"	62	140-545	140-1128
58"	70	140-545	140-1129
69"	78	140-545	140-1130
90"	94	140-545	140-1131







# PROVEN PARTS FOR POPULAR TRENCHERS.

You don't have to own a Ditch Witch® trencher to get quality parts and service. Our conversion sprockets let you fit proven Ditch Witch chain and teeth to more than 70 models from Vermeer®, Case®, Bobcat®, and others. You'll get industry-leading performance on the job and outstanding service you can count on at the dealership. Put Ditch Witch expertise and experience to work for you.

## Our conversion sprockets (on the following page) let you use Ditch Witch chain and teeth.

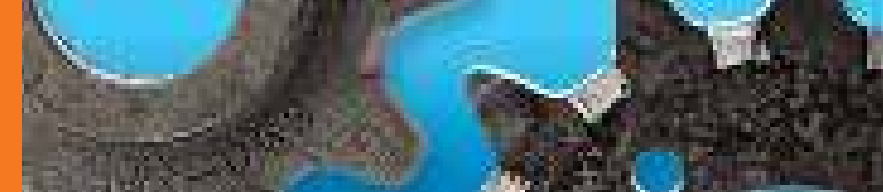
- High-grade steel is selectively heat treated for better wear resistance and shock load absorption.
- Fits and performs to OEM specifications.
- Wide, smooth tooth face profile decreases roller cupping.
- Uniform hard facing distribution.
- Long-life, high-production tooth design.

### VERMEER CHAIN CONVERSION CHART

<b>33K</b>	VERMEER 1.654P	NO CONVERSION NEEDED
<b>50K</b>	VERMEER 2.00P	NO CONVERSION NEEDED
<b>70K/110K</b>	IF YOUR VERMEER 3.00P IS ▶ 46   52   54   56   60   62   64   70   72   74   80   90 THEN YOUR DITCH WITCH 3.110P IS ▶ 45   51   53   55   59   61   63   69   71   73   79   89	

### CASE CONVERSION CHART

<b>33K</b>	CASE 1.654P 28K CHAIN	NO CONVERSION NEEDED
<b>50K</b>	IF YOUR CASE 2.609P IS ▶ 48   58   68   70   78   88   98 THEN YOUR DITCH WITCH 2.00P IS ▶ 63   76   89   92   102   115   128	
<b>70K/110K</b>	IF YOUR CASE 3.075P IS ▶ 54   57   61   67   68   79   80   89   107 THEN YOUR DITCH WITCH 3.110P IS ▶ 55   58   62   68   69   80   81   90   108	
<b>70K/110K</b>	IF YOUR CASE 3.250P IS ▶ 55   62   64   70   75   78   84   86   101 THEN YOUR DITCH WITCH 3.110P IS ▶ 59   66   68   75   80   83   90   92   108	



## VERMEER®

Ditch Witch® Part Number	Vermeer Part Number	Description	Model(s)	Chain Class
142-9516	220359-001	(10T) Headshaft Sprocket	LM35/LM40/V1150/V1550/V1650/V1850	33K/35K
142-9519	205301-001	(10T) Idler Sprocket	LM35/LM40/V1150/V1550/V1650/V1850	33K/35K
142-9517	205366-003	(10T) Headshaft Sprocket	LM35/LM40/LM42/V1150/V1550/V1650/V1850/RT100	33K/35K
142-9494	210000-001	(14T) Split Headshaft Sprocket	4150/4750/V1650	50K
142-9431	203593-001	(12T) Auger Sprocket	4150/4750/V1650	50K
142-9531		(17T) Headshaft Sprocket	RTX450 (High Headshaft)	50K
142-9404	16588-003	(12T) Split Headshaft Sprocket	V430A/V16A/V3550	50K
142-9499	242742001	(15T) Headshaft Sprocket	V3550/V3550A/RT450 Low Headshaft (One Piece Drive Sprocket)	50K
142-9500	203601-001	(12T) Split Headshaft Sprocket	RT350	50K
142-9533		(11T) Headshaft Sprocket		70K/110K
142-9426	204052-001	(10T) Split Headshaft Sprocket	4150/4750/5750/RTX550	70K/110K
142-9433	47896-001	(9T) Auger Sprocket and Shaft	M475/M485/M455/M455A/M465/V454/V470	70K/110K
142-9420	39022-001	(9T) Idler Sprocket (1.25" Shaft)	V434/D16	70K/110K
142-9428	19910-001/40233-001	(12T) Split Headshaft Sprocket	V450/D16/VH18/M475/M485/M455/M455A/M465/V454/V70	70K/110K
142-9427	204039-001	(8T) Auger Sprocket and Shaft	V450/D16/VH18/4150/4750/5750	70K/110K
142-9422	212EE	(7T) Idler Sprocket	M30/M437A	70K/110K
142-9416	201593-001	(15T) Headshaft Sprocket	7550/8050/VH1580	70K/110K
142-9418	206170-001	(12T) Auger Sprocket and Shaft	V450/D16/VH18/7550/8050/VH1580	70K/110K
142-9400	296317080	(15T) Headshaft Sprocket	RTX750, TR750, SO750	70K/110K
142-9401	29306796/15915-003	(10T) Headshaft Sprocket		70K/110K
142-9414		(9T) Idler Sprocket	M475/M485/M455/M455A/M465/ V454/V470	70K/110K
142-9501	264824-001	(10T) Headshaft Sprocket	RT650	70K/110K
142-9502	296306796	11(T) Headshaft Sprocket	RTX750/P1750	70K/110K
142-9503	296288169	(15T) Headshaft Sprocket	V8550/V8550A/VH1850/SO1850/PT8550/V120/TR120/RT950/RT1250/RTX1250/XTS1250	70K/110K

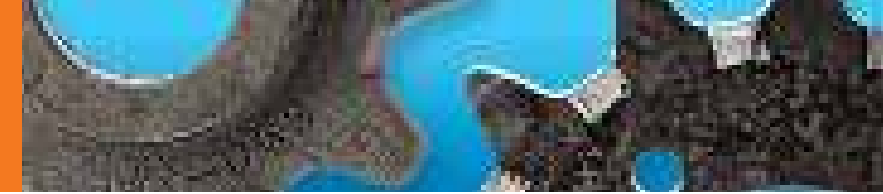
## BOBCAT®/MIDMARK®/BURKEEN®

Ditch Witch® Part Number	Bobcat/Midmark/Burkeen Part Number	Description	Model(s)	Chain Class
142-9528		(15T) Headshaft Sprocket		50K
142-9489	6633361	(9T) Headshaft Sprocket	T108/T114/108/140	33K/35K
142-9514	6633362	(10T) Idler Sprocket Assembly	T108/T114/T116/T208/108/140/B16	33K/35K
142-9488	6641230	(10T) Headshaft Sprocket	T116/T208/B16	33K/35K
142-9487	6654134	Split Headshaft Sprocket	T208/T116/B16	33K/35K
142-9492	6634446	(12T) Split Headshaft Sprocket	T135/T136/250/321/332/B35/B36	33K/35K
142-9491	458166	(12T) Split Headshaft Sprocket	T135/T136/250/321/332/B35/B36	33K/35K
142-9497	6959090	(14T) Headshaft Sprocket		33K/35K
142-9483	6700779	(14T) Headshaft Sprocket	3022/3023/B35/B36	50K
142-9413		(13T) Headshaft Sprocket	LT303	50K
142-9480		(14T) Auger Sprocket		50K
142-9525		(14T) Tail Sprocket		50K
142-9526		(14T) Tail Sprocket		50K

## BARRETO

Ditch Witch Part Number	Barreto Part Number	Description	Model(s)	Chain Class
142-9504	02710B	(10T) Headshaft Sprocket	712/912/1324/1424/1624/1824/2024/2324	33K/35K





## CASE®/ASTECC®/TORO®

Ditch Witch® Part Number	OEM Part Number	Description	Model(s)	Chain Class
142-9513	H033563	(10T) Idler Sprocket	7+2/10+2/12+2/12+4/14+4/16+4/18+4/20+4/25+4/25+4XP/TF300/TL60/TL70/TL100/TL120/Maxi Sneaker	33K/35K
142-9510	H404004/H207688	(10T) Headshaft Sprocket	7+2/10+2/12+2/TL60/TL70/TL100/TL120	33K/35K
142-9514	H503664	(10T) Idler Sprocket Assembly	7+2/10+2/12+2/12+4/14+4/16+4/18+4/20+4/25+4/25+4XP/TF300/TL60/TL70/TL100/TL120/Maxi Sneaker	33K/35K
142-9437	H068494	(11T) Auger Sprocket	12+4/14+4/16+4/18+4/20+4/25+4/25+4XP/TF300/Maxi Sneaker	33K/35K
142-9509	H069773	(10T) Split Headshaft Sprocket	12+4/14+4/16+4/18+4/20+4/25+4/25+4XP/TF300/Maxi Sneaker	33K/35K
142-9529	99-4330/100-1699	(12T) Headshaft Sprocket (2 holes)	TRX Attachment 22447	33K/35K
142-9532	104-1964	(12T) Headshaft Sprocket 6 holes 1/2"	TRX Attachments 22465/TX413 22470 High Torque 22471 High Speed	33K/35K
142-9495	H148569	(12T) Headshaft Sprocket	25+4/25+4XP/30+4/360/40+4/TF600/TF700/DH4/DH4B/DH5	50K
142-9515	H115683	(9T) Idler Sprocket	25+4/25+4XP/30+4/360/40+4/TF600/TF700/DH4/DH4B/DH5	50K
142-9467	126170A1	(18T) Auger Sprocket	460/560	50K
142-9473	130418A1	(18T) Split Headshaft Sprocket	560 Direct Drive	50K
142-9465	104152A1	(19T) Split Headshaft Sprocket	460/560 Planetary with 7.7" Bolt Circle	50K
142-9470	139796A1	(17T) Tail Sprocket	460/560	50K
142-9472	139794A1	(12T) Idler Sprocket	460/560	50K
142-9445	H375899	(14T) Auger Sprocket	25+4/25+4XP/30+4/360/40+4/TF600/TF700/DH4/DH4B/DH5	50K
142-9520	H531251	(9T) Idler Sprocket	25+4/25+4XP/30+4/360/40+4/TF600/TF700/DH4/DH4B/DH5	50K

Ditch Witch® Part Number	OEM Part Number	Description	Model(s)	Chain Class
142-9507	H132761	(8T) Idler Sprocket	DH4/DH4B/DH5/DH7/70+4/TF1000	70K/110K
142-9508	H375881	(8T) Auger Sprocket (2' BORE)	DH4/DH4B/DH5	70K/110K
142-9448	H037168	(10T) Split Headshaft Sprocket	DH7/70+4/TF1000	70K/110K
142-9496	H212811	(9T) Split Headshaft Sprocket	DH4/DH4B/DH5	70K/110K
142-9511	H099226	(8T) Auger Sprocket (2 1/8" BORE)	DH7/70+4/TF1000	70K/110K
142-9468	122432A1	(19T) Split Headshaft Sprocket	460 Direct Drive with 4.25" Bolt Circle	70K/110K
142-9518	H438347	(13T) Split Headshaft Sprocket (9/16" Bolt Holes)	660/760/860/960	70K/110K
142-9461	H433851	(13T) Tail Sprocket (1/2" Bolt Holes)	660/760/860/960	70K/110K
142-9506	H433989	(8T) Idler Sprocket	660/760/860/960	70K/110K
142-9454	H433352	(10T) Auger Sprocket	760	70K/110K
142-9463	H434598	(11T) Auger Sprocket	660/860	70K/110K
142-9512	186252A1	(13T) Auger Sprocket	660/760/860/960 (for use with Large Tail Roller Boom)	70K/110K
142-9455	H434598	(13T) Tail Sprocket (1/2" Bolt Holes)	760	70K/110K
142-9457	H433264	(13T) Split Headshaft Sprocket	760	70K/110K
142-9458	H438347	(13T) Split Headshaft Sprocket	760	70K/110K





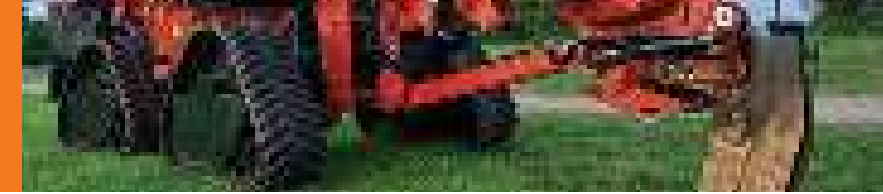
# GET THE MOST OUT OF YOUR MACHINE.

Only Ditch Witch® plow blades deliver the performance you demand from your Ditch Witch vibratory plow or vibratory plow attachment. Many types of blades are available for different soils and types of utility installation, plus accessories such as silt fence installers and sod cutters to expand your machine's capabilities.

## ADJUSTABLE FEED BLADES

Part Number	Cover Depth	Feed Width	Radius	Model(s)
185-1010	12-18"	.75"	3.0"	420SX
185-1011	18-24"	.75"	3.0"	420SX
185-596	12-18"	1.0"	3.0"	420SX
185-597	18-24"	1.0"	3.0"	420SX
187-028	10-16"	.75"	.50"	420SX
186-913	12-24"	.50"	3.0"	RT45, SK7VP, 410SX (Fixed Chute Adjustable Blade)
185-397	24-30"	.75"	3.0"	RT55
185-398	18-24"	.75"	3.0"	RT55
185-399	24-30"	1.0"	10"	RT55
185-400	18-24"	1.0"	10"	RT55
185-421	24-30"	1.5"	6.5"	RT55
185-422	18-24"	1.0"	6.5"	RT55
185-423	24-30"	2.0"	8.0"	RT55
185-424	18-24"	2.0"	8.0"	RT55
185-305	22-30"	1.0"	9.0"	RT80Q, RT95H, RT105, RT115H, RT115Q, HT115, RT125, RT125Q
185-306 with toe	22-30"	1.0"	9.0"	RT80Q, RT95H, RT105, RT115H, RT115Q, HT115, RT125, RT125Q
185-311	22-30"	1.5"	9.0"	RT80Q, RT95H, RT105, RT115H, RT115Q, HT115, RT125, RT125Q
185-310 with toe	22-30"	1.5"	9.0"	RT80Q, RT95H, RT105, RT115H, RT115Q, HT115, RT125, RT125Q
185-316	22-30"	2.0"	10"	RT80Q, RT95H, RT105, RT115H, RT115Q, HT115, RT125, RT125Q
185-315 with toe	22-30"	2.0"	10"	RT80Q, RT95H, RT105, RT115H, RT115Q, HT115, RT125, RT125Q
185-283	28-36"	1.5"	7.5"	RT80Q, RT95H, RT105, RT115H, RT115Q, HT115, RT125, RT125Q
185-281 with toe	28-36"	1.5"	7.5"	RT80Q, RT95H, RT105, RT115H, RT115Q, HT115, RT125, RT125Q
185-285	28-36"	2.0"	10"	RT80Q, RT95H, RT105, RT115H, RT115Q, HT115, RT125, RT125Q
185-284 with toe	28-36"	2.0"	10"	RT80Q, RT95H, RT105, RT115H, RT115Q, HT115, RT125, RT125Q
185-1081	28-36"	2.0"	10"	RT80Q, RT95H, RT105, RT115H, RT115Q, HT115, RT115Q, RT120Q, RT125, RT125Q
185-1091	28-36"	1.5"	7.5"	RT80Q, RT95H, RT105, RT115H, RT115Q, HT115, RT115Q, RT120Q, RT125, RT125Q
185-1103	34-42"	1.5"	7.5"	RT105, RT115Q, RT120Q, RT125, RT125Q
185-1110	34-42"	2.0"	10"	RT105, RT115Q, RT120Q, RT125, RT125Q



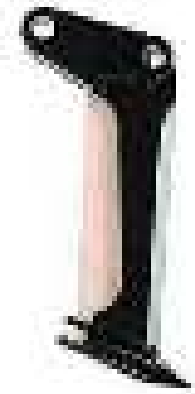


## HYDRAULICALLY ADJUSTABLE



Part Number	Cover Depth	Feed Width	Radius	Model(s)
185-501	23-40"	2.0"	10"	HT115
185-549	23-40"	3.0"	14"	HT115
185-582	26-48"	2.0"	10"	HT115
185-574	26-48"	3.0"	14"	HT115

## SPEED BLADES



Part Number	Cover Depth	Blade Thickness	Bullet Diameter	Model(s)
185-1030	12-18"	.50"	1.5"	420SX
185-1057	12"	.50"	1.5"	RT45, SK5VP, SK7VP
185-1058	18"	.50"	1.5"	SK5VP, R230, R300
186-810	12"	.375"	2"	RT45, SK5VP, SK7VP, 410SX, R230, R300
186-811	18"	.375"	2"	410SX

## FEED BLADES

Part Number	Cover Depth	Feed Width	Radius	Model(s)
185-960	12"	.75"	3.0"	420SX
185-202	9.5"	.75"	3.1"	SK5VP
186-463	12"	.75"	7.5"	SK5VP, R230, R300
186-455	12"	.75"	3.0"	RT45, SK5VP, SK7VP, 410SX, R230, R300
186-507	18"	.75"	3.0"	RT45, SK7VP, 410SX
186-521	24"	.75"	3.0"	RT45, SK7VP, 410SX
186-528	18"	1.0"	10"	RT45, SK7VP, 410SX
186-754	12"	.375"	1.0"	100SXH
186-757	12"	.50"	1.0"	100SXH
185-334 with toe	30"	1.0"	7.375"	RT80Q, RT95H, RT100, RT105, RT115H, RT115Q, HT115, RT120, RT120Q, RT125, RT125Q
185-333 with toe	30"	1.5"	6.625"	RT80Q, RT95H, RT100, RT105, RT115H, RT115Q, HT115, RT120, RT120Q, RT125, RT125Q
185-332 with toe	30"	2.0"	10"	RT80Q, RT95H, RT100, RT105, RT115H, RT115Q, HT115, RT120, RT120Q, RT125, RT125Q
185-335 with toe	36"	1.5"	6.625"	RT80Q, RT95H, RT100, RT105, RT115H, RT115Q, HT115, RT120, RT120Q, RT125, RT125Q
185-329 with toe	36"	2.0"	6.625"	RT80Q, RT95H, RT100, RT105, RT115H, RT115Q, HT115, RT120, RT120Q, RT125, RT125Q



## PULL BLADES

Part Number	Cover Depth	Blade Thickness	Bullet Diameter	Model(s)
185-1021	12"	.50"	1.5"	420SX
185-1022	12"	.50"	2.0"	420SX
186-424	12"	.375"	1.5"	RT45, SK5VP, SK7VP, 410SX, R230, R300
186-336	12"	.375"	3.0"	RT45, SK5VP, SK7VP, 410SX, R230, R300
186-425	18"	.375"	1.5"	RT45, SK7VP, 410SX
186-337	18"	.375"	3.0"	RT45, SK7VP, 410SX
186-196	24"	.75"	.75"	RT45, SK7VP, 410SX
186-435	12"	.375"	.143"	100SXH
185-425	24-30"	.75"	3.0"	RT55
185-426	18-24"	.75"	3.0"	RT55
185-427	24-30"	.75"	-	RT55
185-356	22-30"	1.0"	3.0"	RT80Q, RT95H, RT100, RT105, RT115H, RT115Q, RT120, RT120Q, HT115, RT125, RT125Q
185-345	24 in	1.0 in	3.0 in	RT80Q, RT95H, RT100, RT105, RT115H, RT115Q, RT120, RT120Q, HT115, RT125, RT125Q
185-357	28-36 in	1.0 in	3.0 in	RT80Q, RT95H, RT100, RT105, RT115H, RT115Q, RT120, RT120Q, HT115, RT125, RT125Q







## FLOAT BLADES



Part Number	Cover Depth	Feed Width	Model(s)
186-192	12"	1.0"	RT45, SK7VP
186-194	18"	1.0"	RT45, SK7VP, 410SX
186-195	18"	1.25"	RT45, SK7VP, 410SX
186-197	24"	1.0"	RT45, SK7VP, 410SX
186-198	24"	1.25"	RT45, SK7VP



## CHUTE ASSEMBLIES

Part Number	Cover Depth	Feed Width	Radius	Model(s)
186-480	12"	.375"	1.5"	RT45, SK7VP
186-485	12"	.75"	3.0"	RT45, SK5VP, SK7VP
186-536	18"	.375"	1.5"	RT45, SK7VP
186-551	18"	1.0"	10"	RT45, SK7VP
186-563	24"	1.0"	10"	RT45, SK7VP



## SILT FENCE BLADES

Part Number	Cover Depth	Blade Thickness	Model(s)
185-1079	7"	.375"	SK5VP, 1VP4

Part Number	Description
185-1124	Point
185-1125	Flex Pin
185-1126	Lower Guard
185-1127	Upper Guard
185-1128	Pin
185-1129	Retainer
190-2637	Replaceable Edge Kit*



\* Kit includes all the above items.

## HD BLADE WEAR PARTS



## DOUBLE DISK PLOW BLADES



Part Number	Cover Depth	Feed Width	Radius	Model(s)
185-1073	6"	.50"	2.0"	RT45, SK5VP, SK7VP, 410SX, R230, R300

### KEY FEATURES/BENEFITS

- Patented solution for shallow installations in high traffic areas like fiber-to-the-home work and telephone and cable drops.
- Installs product 0.5" (13 mm) diameter x 6" (150 mm) deep x 2" (50 mm) bend radius.
- Less damage to establish turf than traditional plow blades.
- Requires less drawbar than traditional blades.

## HD PLOW BLADES

Part Number	Cover Depth	Feed Width	Radius	Model(s)
185-1131	34-42"	1.5"	7.5"	RT115Q, RT120Q, RT125, RT125Q
185-1132	34-42"	2.0"	10"	RT115Q, RT120Q, RT125, RT125Q
185-1133*	34-42"	2.0"	15"	RT115Q, RT120Q, RT125, RT125Q

\* hinged blade and ribbon chute

### KEY FEATURES/BENEFITS

- Engineered to last twice as long as other blades on the market. Its durable design and heavy-duty components will increase your productivity on every job.
- Replaceable leading edges are located on the front of the blade where most wear normally occurs. This feature prolongs the life of the blade and eliminates the labor associated with hardsurfacing.
- Blade options to fit your needs include both a feed blade or a pull blade. No matter the job, we've got a blade for you.
- Innovative hinged design is an optional feature designed to reduce drag and wear, while improving turn radius and overall performance.
- Designed for the toughest jobs, this blade excels in rocky, sandy and extremely abrasive conditions.







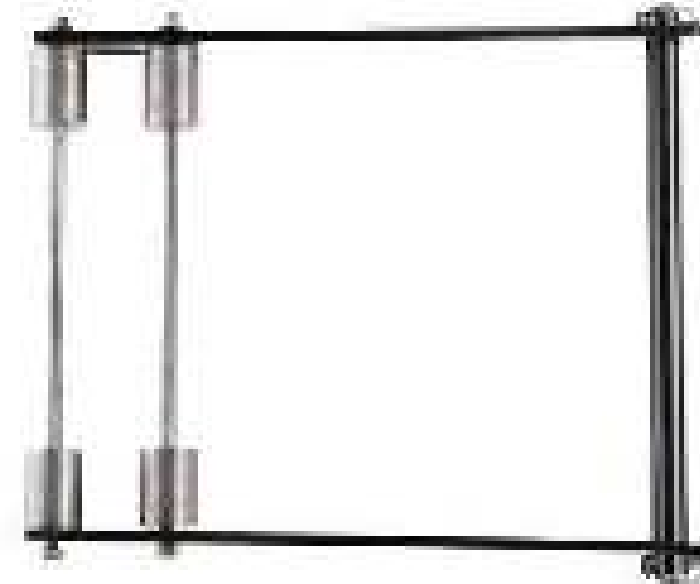
## SOD CUTTER KITS

Part Number	Model(s)
190-1227	R230, R300
190-084	410SX
190-1075	420SX
190-1468 Heavy Duty	420SX



## REEL CARRIERS

Part Number	Model(s)
190-1225	R230, R300
100-026	100SXH
190-512	410SX



## SKID SHOE CONVERSION KITS

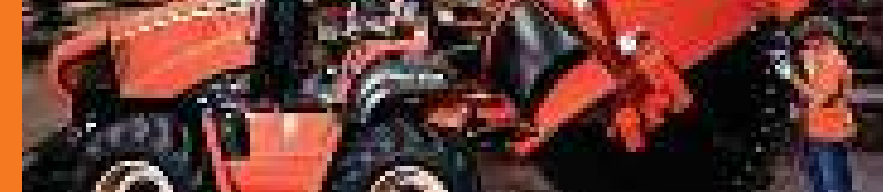
Part Number	Model(s)
190-220	R230, R300, SK5VP
190-213	410SX
190-212	420SX



## PULLING GRIPS

Part Number	Size
185-901	3.8" to 1/2"
185-902	1/2" to 3/4"
185-903	3/4" to 1 1/4"
185-904	1 1/4" to 2"
185-906	2" to 2 3/4"
185-907	2 3/4" to 3 1/2"
185-913	3 1/2" to 4 1/4"
185-914	4 1/4" to 4 3/4"
110-289	Anchor Shackle



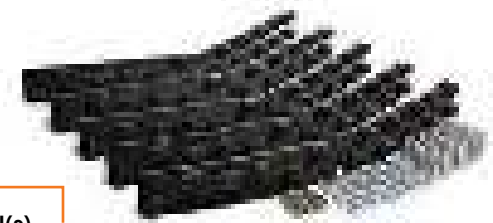


# COMPACT, POWERFUL PERFORMANCE.



Ditch Witch® earth saws are designed with a unique drive that minimizes the size of the wheel, resulting in a more powerful, compact package that slices through earth, asphalt, concrete, and rock. Our compact utility saw attachment can cut on centerline or offset to the right of the unit, depending on what you need.

## SAW SEGMENT KITS



Part Number	Trench Width	Saw Type	Bit Quantity	Cutting Pattern	Compatible Model(s)
190-1310	2.5" Centerline	H342 18"	36	Chevron	RT40, RT45
100-861	8" Centerline	H942 30"	60	Chevron	RT95, RT115, HT115
100-054	4.5" Centerline	H1140 40"	80	Chevron RT115 QUAD, HT115	RT95, RT115,
100-866	6" Centerline	H1140 40"	80	Chevron RT115 QUAD, HT115	RT95, RT115,
100-862	8" Centerline	H1140 40"	80	Chevron RT115 QUAD, HT115	RT95, RT115,

## INSERT BITS



Part Number	Description	Compatible Model(s)
136-101	Insert Bit	RT40, RT45
136-222	Insert Bit	RT55, RT95, RT115, RT115 QUAD, HT115
131-290	Insert Bit	RT55, RT95, RT115, RT115 QUAD, HT115
136-102	Heavy Duty Insert Bit	RT40, RT45
136-100	Cap Bit	RT40, RT45
259-001	Bit Puller - Hammer	RT45, RT55, RT80, RT105, RT125, RT125Q
259-002	Bit Puller - Slide Hammer	RT45, RT55, RT80, RT105 RT125, RT125Q

## WEAR BAR KITS

Part Number	Compatible Models
100-085	RT95, RT115, RT115 QUAD, HT115





# INSTALL FIBER-OPTICS AT LIGHTNING SPEED.



Ditch Witch® offers highly cost-effective solutions for installing fiber-optic cable along paved rights-of-way. These machines deliver maximum speed and efficiency, cleanly slicing through asphalt to create the ideal trench.

## HIGH SPEED SAW BLADES

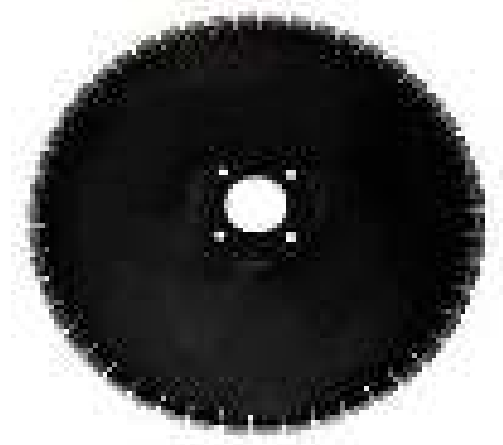
(FOR USE WITH HIGH SPEED SAW MOTOR ONLY)

Part Number	Description	Maximum Depth	Width	Type	Model
135-1609	PCD Diamond Blade (32" x .375")	12" (30 cm)	0.375" (9.5 mm)	PCD	MT12
135-1447	PCD Diamond Blade (32" x .500")	12" (30 cm)	0.50" (13 mm)	PCD	MT12
135-1481	PCD Diamond Blade (32" x .750")	12" (30 cm)	0.75" (19 mm)	PCD	MT12
135-1612	PCD Diamond Blade (32" x 1.00")	12" (30 cm)	1.00" (25 mm)	PCD	MT12
135-1610*	Concrete Blade (32" x .375")	12" (30 cm)	0.375" (9.5 mm)	Concrete	MT12
135-1611*	Concrete Blade (32" x .500")	12" (30 cm)	0.5" (13 mm)	Concrete	MT12
135-1485*	Concrete Blade (32" x .750")	12" (30 cm)	0.75" (19 mm)	Concrete	MT12
135-1516*	Concrete Blade (32" x 1.024")	12" (30 cm)	1.024" (26 mm)	Concrete	MT12

\* requires 190-2330 bb12 water kit.



301-1447



135-1516



Only Ditch Witch® digging components are designed and specifically manufactured to work together as a system for optimal performance.



# STANDARD SAW BLADES

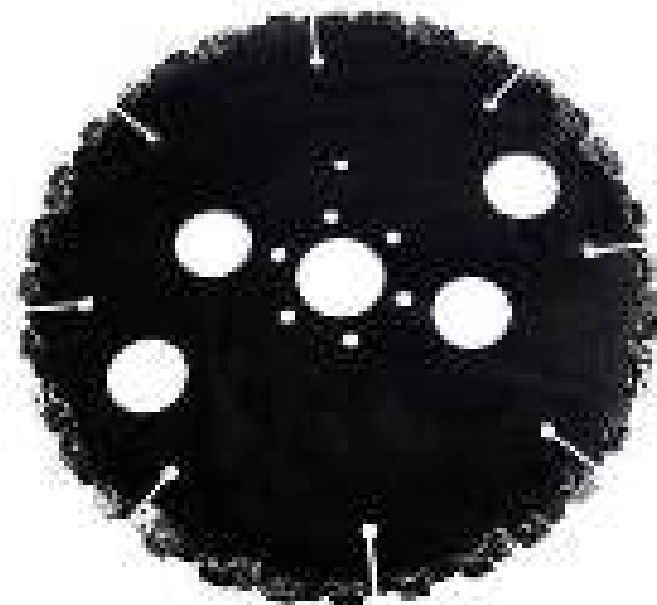
(FOR USE WITH STANDARD SAW MOTOR ONLY)

Part Number	Description	Maximum Depth	Width	Type	Model
301-1096	Saw Blade (.75", Shark, 24T)	12" (30 cm)	0.75" (19 mm)	Shark	MT12
301-1590	Saw Blade (.75", Combo, 24T/8T)	12" (30 cm)	0.75" (19 mm)	Combo	MT12
301-0580	Saw Blade (.95", Conical, 32T)	12" (30 cm)	0.95" (24 mm)	Conical	MT12
301-0686	Saw Blade (1.25", Conical, 32T)	12" (30 cm)	1.25" (32 mm)	Conical	MT12
302-2276	Saw Blade (1.5", Conical, 32T)	12" (30 cm)	1.5" (38 mm)	Conical	MT12
135-5008	Fiberblade (26" x .500")	9" (23 cm)	0.50" (13 mm)	PDC	MT9
135-5009	Fiberblade (26" x .750")	9" (23 cm)	0.75" (19 mm)	PDC	MT9
135-5010	Fiberblade (26" x 1.00")	9" (23 cm)	1.00" (25 mm)	PDC	MT9
135-5007	Fiberblade (26" x 1.50")	9" (23 cm)	1.50" (38 mm)	PDC	MT9
135-5000	Fiberblade (34" x .500")	12" (30 cm)	0.50" (13 mm)	PDC	MT12
135-5001	Fiberblade (34" x .750")	12" (30 cm)	0.75" (19 mm)	PDC	MT12
135-5005	Fiberblade (34" x 1.00")	12" (30 cm)	1.00" (25 mm)	PDC	MT12
135-5006	Fiberblade (34" x 1.50")	12" (30 cm)	1.50" (38 mm)	PDC	MT12
135-5011	Fiberblade (43" x .500")	16" (41 cm)	0.50" (13 mm)	PDC	MT16
135-5012	Fiberblade (43" x .750")	16" (41 cm)	0.75" (19 mm)	PDC	MT16
135-5013	Fiberblade (43" x 1.00")	16" (41 cm)	1.00" (25 mm)	PDC	MT16
135-5014	Fiberblade (43" x 1.50")	16" (41 cm)	1.50" (38 mm)	PDC	MT16

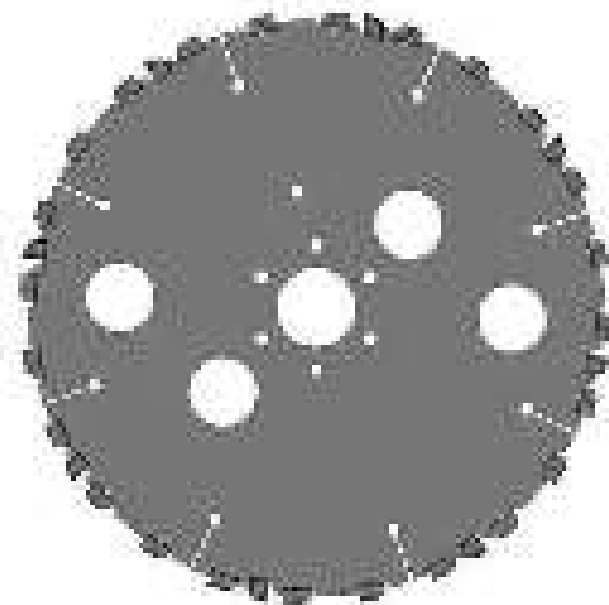
\* 135-5007 takes 14 302-4844 to rebuild. 135-5006 takes 20 302-4844 to rebuild. 135-5014 takes 25 302-4844 to rebuild.



301-1096



301-0580



301-1590

# PARTS AND ACCESSORIES

Part Number	Description
135-1211	M10 Carbide Full Cap Bit (for use with conical and combo blades)
105-1541	Roll Pin (5 mm x 16 mm) for use with 135-1211 conical bit
190-2330	bb12 Water Kit
302-4844	PDC Segment (1.5")
105-2303	Spiral Pin (2 per 302-4844 segment)



105-1541



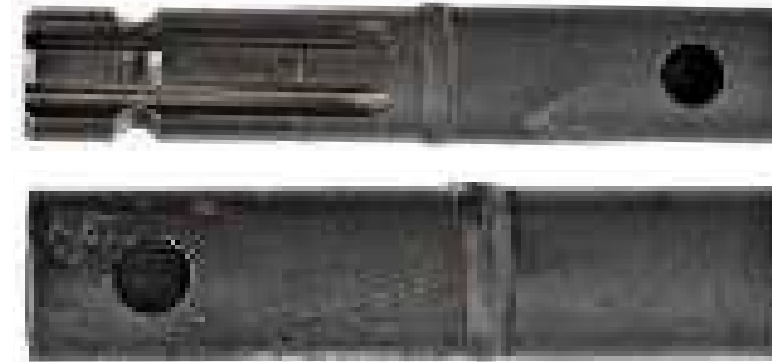
135-1211



# SIMPLIFY YOUR SHORT BORES.

The Ditch Witch® Roto Witch® attachment is used for short bores underneath sidewalks, driveways and other obstacles. It offers great digging performance while minimizing jobsite restoration. Compatible with numerous Ditch Witch machines, the Roto Witch attachment can bore and backream up to 12" (300 mm) in diameter.

## CONNECTOR SHAFTS



Part Number	Description	Style
167-035	Coupler	Threaded
351-266	Pin	Threaded Slip Latch To Threaded
351-236	Coupler	Slip Latch
351-267	Coupler	Slip Latch Threaded To Slip Latch

## DRILL STEMS

Part Number	Description	Style
351-096	10' Drill Pipe Section	Threaded

Part Number	Description	Style
351-030	All Thread For Above	Threaded

Part Number	Description	Style
351-255	5' Stem Section	Slip Latch
351-256	10' Stem Section	Slip Latch

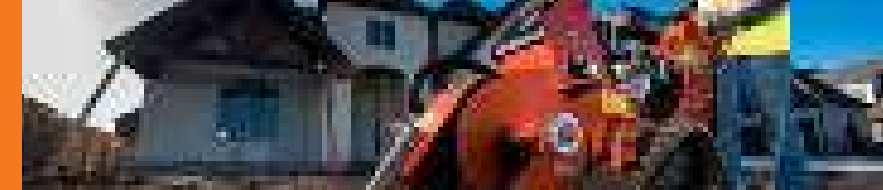


## DRILL STEM GUIDE ASSEMBLY



Part Number
118-097





# BITS



## FISH TAIL BIT

Part Number	Style
351-026	Threaded



## COMPACTION BIT

Part Number	Cut	Style
351-136	1.50"	Slip Latch
351-138	1.75"	Slip Latch
351-140	2.00"	Slip Latch
351-142	2.25"	Slip Latch



## SAND BIT

Part Number	Cut	Style
351-143	1.38"	Slip Latch

## ROCK BIT

Part Number	Cut	Style
351-310	1.5" Two Prong	Slip Latch
351-311	2.0" Two Prong	Slip Latch
351-312	3.0" Two Prong	Slip Latch
351-337	1.5" Spade	Slip Latch
351-313		Bit Body
351-314		Bit Body
105-525		Roll Pin For Rock Bit



# PIPE PULLING ADAPTERS



Part Number	Size
354-046	1" NPT
354-047	1½" NPT
354-048	2" NPT
354-049	2½" NPT
354-050	3" NPT
354-051	4" NPT
354-052	6" NPT

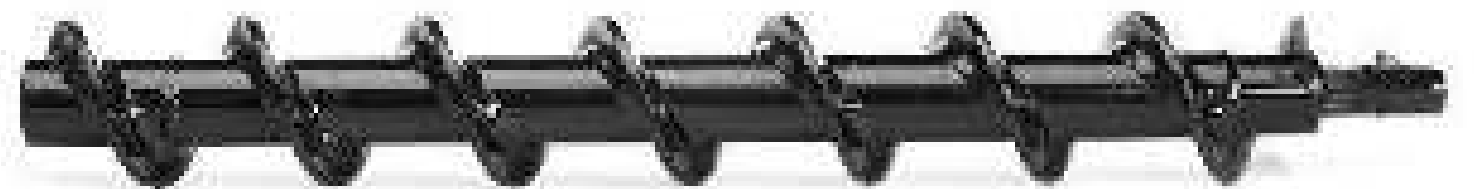
# PULLING GRIPS



Part Number	Size
185-901	3.8" to ½"
185-902	½" to ¾"
185-903	¾" to 1¼"
185-904	1¼" to 2"
185-906	2" to 2¾"
185-907	2¾" to 3½"
185-913	3½" to 4¼"
185-914	4¼" to 4¾"
110-289	Anchor Shackle

# FROST AUGERS

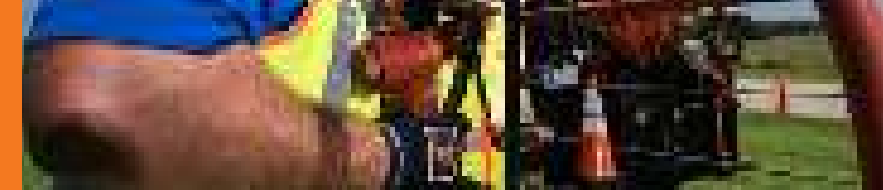
Part Number	Cut	Style
351-331	1.5"	Slip Latch 1.5" & 2" Rock Bits
351-332	3.0"	Slip Latch 3" Rock Bits



# REAMERS

Part Number	Diameter	Style
351-065	4.75"	Threaded
351-013	6.00"	Threaded
351-014	8.00"	Threaded
351-059	10.00"	Threaded
351-031	12.00"	Threaded
351-147	2.50"	Slip Latch
351-148	3.00"	Slip Latch
351-149	3.50"	Slip Latch
351-150	4.00"	Slip Latch





**INCREASE YOUR PERFORMANCE.  
INCREASE YOUR PROFITS.**

Ditch Witch® provides a variety of new attachments for vacuum excavators, built to increase your performance and productivity. Manufactured to work as hard as you do, these attachments will maximize versatility so you can tackle any jobsite challenge.

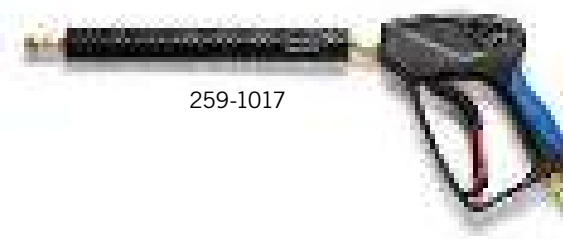


Prospector Lance

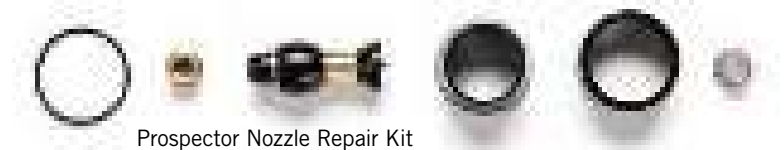
## HYDRO EXCAVATION

Part Number	Model(s)	Description
150-2624	FX20, FX25, FX30, FXT30, MV800	Prospector™ Nozzle (#3)
150-2625	FX50, FXT50, FX65, FXT65	Prospector Nozzle (#5)
190-2506	FX50, FXT50, FX65, FXT65	Prospector Assembly Lance 48" (#5)
190-2507	FX20, FX25, FX30, FXT30, MV800	Prospector Assembly Lance 48" (#3)
259-1012	All	Prospector Extension 48"
259-1017	All	Wash Wand
150-2630	FX20, FX25, FX30, FXT30, MV800	Prospector Nozzle (#3) Repair Kit
150-2631	FX20, FXT50, FX65, FXT65	Prospector Nozzle (#5) Repair Kit

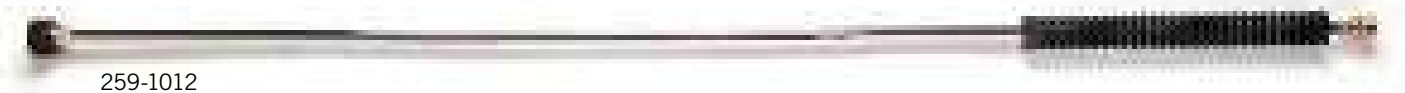
Prospector Nozzle



259-1017



Prospector Nozzle Repair Kit



259-1012

## AIR EXCAVATION

Part Number	Model(s)	Description
350-4430	FXT30 Air, FXT50 Air, FXT65 Air	Air Saber Assembly
350-4431	FXT30 Air, FXT50 Air, FXT65 Air	Air Saber Extension 36"





## Reduce downtime. Increase productivity. Preserve equipment value.

Failure to perform regular maintenance on equipment is a primary cause of breakdowns, and over time can greatly reduce the value of your machine. Orange Armor® Uptime Kits are designed to help you properly care for your equipment, resulting in consistent productivity, reduction of major repair costs and maximum equipment value.

Each kit contains air, fuel, oil and hydraulic filters, spark plugs, or other parts needed for scheduled maintenance specified for each machine. The larger kits also include basic wear parts and are shipped in lockable, reusable storage trunks at no additional cost.

Make scheduled maintenance easier, more convenient and more affordable with an Orange Armor Uptime Kit customized for your equipment.



Basic Kits



1000 hour kits



### KEY FEATURES/BENEFITS

- Up to 15% savings versus buying parts individually
- Customized for each machine to ensure proper maintenance
- Larger kits include some wear items in addition to maintenance items
- Reusable, lockable storage trunks provided at no additional cost on larger kits

### TRENCHERS

Part Number	Model(s)	Kit Type
190-2200	C12	Basic
190-2426	C14	Basic
190-2430	C16/C16X	Basic
190-2435	C24X	Basic
190-2440	C30X	Basic
190-1759	RT12	Basic
190-1760	RT16	Basic
190-1761	RT20/24	Basic
190-1764	RT45	Basic
190-1766	410SX T4i	Basic
190-1767	420SX T2/T4i	Basic
190-2103	RT30	Basic
190-2122	RT80Q T4F	1000 HR
190-2142	RT120 T4i	1000 HR
190-2147	RT100 T4i	1000 HR
190-2151	RT45 T4F	1000 HR
190-2152	RT45 T4i	1000 HR
190-2154	RT45 T4i	Basic
190-2166	RT120Q T4i	1000 HR
190-2176	410SX GAS	1000 HR
190-2181	RT55 T4i	1000 HR
190-2151	RT45 T4F	1000 HR

### TRENCHLESS

Part Number	Model(s)	Kit Type
190-2100	FM25	Basic
190-2105	FM13V	Basic
190-2131	JT5 T4F	1000 HR
190-2172	JT9 T4F	1000 HR
190-2174	JT9 T4i	1000 HR
190-2112	JT20 T4F/T4i	1000 HR
190-2106	JT25 T3	1000 HR
190-2107	JT25 T4i	1000 HR
190-2136	JT/AT30 T3	1000 HR
190-2137	JT/AT30 T4i	1000 HR
190-2116	JT/AT100 T3	1000 HR
190-2126	JT1220 T4i	1000 HR
190-2173	JT922 T3	1000 HR
190-2191	MR90	1000 HR
190-2156	JT/AT60 T3	1000 HR

### VACUUM EXCAVATORS

Part Number	Model(s)	Kit Type
190-2101	FX20	Basic
190-2102	FX25/MV800	Basic
190-2104	FX30/FXT30 T3/T4F (NOT T4i)	1000 HR
190-2161	FX50/FXT50 T4i	1000 HR
190-2162	FX50/FXT50 T4F	1000 HR
190-2186	FX60 T4i	1000 HR
190-2187	FX60/FXT60 T4	1000 HR

### MINI SKID STEERS

Part Number	Model(s)	Kit Type
190-1762	SK350	Basic
190-1763	SK650/SK750/SK755 T4i	Basic
190-2196	SK850	Basic
190-1765	R300	Basic



Know what's **Below**.  
Call before you dig.



**Ditch Witch**<sup>®</sup>  
ditchwitch.com



THE CHARLES MACHINE WORKS, INC. DITCH WITCH<sup>®</sup> WORLDWIDE HEADQUARTERS PERRY, OK 73077-0066 U.S.A.  
TOLL FREE 800 654 6481 PHONE 580 336 4402 FAX 580 336 3458 INTERNATIONAL FAX 580 572 3561  
FOR INFORMATION ABOUT EASY FINANCING AND TO FIND THE DEALER NEAREST YOU, VISIT DITCHWITCH.COM.

SHARK TOOTH<sup>®</sup> IS A FEDERALLY REGISTERED TRADEMARK OF CONSOLIDATED CARBIDE, LTD.

SHARK<sup>®</sup> IS A FEDERALLY REGISTERED TRADEMARK OF CONSOLIDATED CARBIDE, LTD.

SHARK CHAIN<sup>®</sup> IS A FEDERALLY REGISTERED TRADEMARK OF CONSOLIDATED CARBIDE, LTD.

19K | 33K/35K | 50K | 70K/110K | 150K/225K

PLOW BLADES | EARTH SAW | ROTO WITCH<sup>®</sup> | MICROTRENCHING | VACUUM ACCESSORIES